

# 1A2

9501 PULL-TYPE COMBINE

H41820 -UN-01JAN94



*JOHN DEERE 9501 PULL-TYPE COMBINE WITH BELT PICKUP AND PICKUP PLATFORM*

*(635401-645700)*

*(SPECIFICATIONS AND DESIGN SUBJECT TO CHANGE WITHOUT NOTICE)*

# 1A3

9501 PULL-TYPE COMBINE

## NOTE

FOR THREE-ROLLER BELT PICKUP PARTS INFORMATION, REFER TO JOHN DEERE THREE-ROLLER BELT PICKUP PARTS CATALOG - PC-1189.

## IMPORTANT

THIS PARTS CATALOG CONTAINS INFORMATION FOR THE 9501 PULL-TYPE COMBINE. VINTAGE IS DETERMINED BY THE COMBINE SERIAL NUMBER OF THE PRODUCT IDENTIFICATION NUMBER (PIN). IT IS IMPORTANT THAT THE CORRECT NUMBERS BE USED WHEN ORDERING PARTS.

### PRODUCT INFORMATION NUMBER (PIN) PLATE

THE PRODUCT INFORMATION PLATE (PIN) IS LOCATED IS LOCATED ON LEFT-HAND SIDE ABOVE REAR AXLE. AN EXAMPLE OF THE TWO-LINES ON THIS PIN PLATE IS:

HO9501X635401  
COMBINE

(FIRST LINE)

HO - MANUFACTURING UNIT (HARVESTER WORKS)  
9501 - MODEL IDENTIFIER  
X - CONFIGURATION CODE/MODEL IDENTIFIER SUFFIX  
635401 - SEQUENTIAL NUMBER USED IN SERIAL NO. COLUMN

(SECOND LINE)

COMBINE - TYPE OF PRODUCT

## PARTS LISTING INFORMATION

SERIAL NUMBER OR PRODUCT IDENTIFICATION NUMBER (PIN) INFORMATION SHOWS ON WHICH MACHINES PART MAY BE USED; FOR EXAMPLE:

- THE PART CAN BE USED ON ALL MACHINES.
- 000000 THE PART CAN BE USED ON ALL MACHINES UP TO AND INCLUDING THE SERIAL NUMBER LISTED.
- 000000- THE PART CAN BE USE ON ALL MACHINES BEGINNING WITH THE SERIAL NUMBER LISTED.
- 000000-000000 THE PART CAN BE USED ON ALL MACHINES BETWEEN AND INCLUDING SERIAL NUMBERS LISTED.

# 1A4

9501 PULL-TYPE COMBINE

## DIRECTION ARROW

ARROWS ARE USED WITH ILLUSTRATIONS TO INDICATE THE FRONT OF THE UNIT. "RIGHT-HAND" AND "LEFT-HAND" SIDES ARE DETERMINED BY FACING IN THE DIRECTION OF MACHINE FORWARD TRAVEL.

## BOX-ENCLOSED ILLUSTRATIONS

A KEY NUMBER, SHOWN IN THE PARTS LIST, IS ASSIGNED TO A BOX ENCLOSING ALL PARTS SOLD AS A SERVICE ASSEMBLY. A BOX NOT KEYED INCLUDES NON-CURRENT PARTS.

## KITS

KIT INFORMATION WILL BE FOUND IMMEDIATELY FOLLOWING THE STORY IN WHICH IT IS USED. THE ILLUSTRATION IS REPEATED WITH ONLY THE KIT PARTS CALLED OUT AND WITH ALL OTHER PARTS SHOWN IN PHANTOM.

## JDM REMANUFACTURED COMPONENTS

THE SERVICE PARTS LISTED IN THIS CATALOG ARE INTENDED FOR THE REPAIR OF ORIGINAL EQUIPMENT COMPONENTS. ALTHOUGH MOST SERVICE PARTS MAY BE USED TO REPAIR REMANUFACTURED COMPONENTS, THE REMANUFACTURED DESIGN MAY CHANGE PARTS SUFFICIENTLY SO THAT SERVICE PARTS ARE INADEQUATE OR NOT USABLE.

## BOLT AND CAP SCREW STRENGTH IDENTIFICATION

BOLTS AND CAP SCREWS REQUIRED TO HAVE HIGH-STRENGTH QUALITIES EQUIVALENT TO SAE GRADE 8 ARE IDENTIFIED THROUGHOUT THIS CATALOG BY THE DESCRIPTION HS SAE 8. ALL STANDARD BOLTS AND CAP SCREWS ARE SAE GRADE 5 OR LOWER. BOLTS AND CAP SCREWS REQUIRED TO HAVE HIGH-STRENGTH QUALITIES EQUIVALENT TO PROPERTY CLASS 10.9 ARE IDENTIFIED THROUGHOUT THIS CATALOG BY THE DESCRIPTION HS 10.9. ALL STANDARD BOLTS AND CAP SCREWS ARE PROPERTY CLASS 8.8 OR LOWER.

## SI UNITS OF MEASURE

METRIC DIMENSIONS ARE GIVEN, WHERE APPLICABLE, THROUGHOUT THIS PARTS CATALOG.

## TRADEMARKS

THROUGHOUT THIS PARTS CATALOG, YOU WILL FIND THE FOLLOWING DEERE & COMPANY TRADEMARKS:

DIAL-A-SPEED™  
DIAL-A-MATIC™  
HARVESTRAK™

POSI-TORQ™  
TORQ-GARD SUPREME®  
QUIK-TATCH™

## CHANGE INDICATOR LINE

CHANGES AFFECTING THE ORDERING OF PARTS ARE IDENTIFIED BY VERTICAL LINES MARKED IN THE LEFT-HAND MARGIN OF REVISED PARTS LISTING IMAGES. A LINE IS ALSO AT THE LEFT-HAND EDGE OF THE SAME PART NUMBER IN THE NUMERICAL INDEX TO SHOW THE LOCATION OF REVISED INFORMATION.

## FUNCTION CODE

(EXAMPLE - FC: 5000)

FUNCTION CODES ARE LOCATED ON EACH PAGE IN THE UPPER RIGHT-HAND CORNER ON THE TITLE LINE. THE CODE LISTED IS A GROUPING CODE THAT CAN BE USED FOR WARRANTIES AND FOR DTAC TO IDENTIFY CERTAIN AREAS.

## COMPLETE GOODS LISTINGS

COMPLETE GOODS ARE IN BOLD FACE TYPE. ORDER SEPARATELY. DO NOT INCLUDE ON REPLACEMENT PARTS ORDER.

# 1A5

9501 PULL-TYPE COMBINE

---

## SECTIONAL INDEX

|  | SECTION |
|--|---------|
| GENERAL INFORMATION. . . . .                                   | 10      |
| ELECTRICAL . . . . .   | 40      |
| POWER TRAIN . . . . .  | 50      |
| HYDRAULICS . . . . .   | 70      |
| SEPARATOR SHELL . . . . .                                      | 80      |
| HEADERS - REFER TO INDIVIDUAL HEADER PARTS CATALOGS. . . . .   | 100     |
| FEEDER HOUSE . . . . .   | 110     |
| SEPARATOR . . . . .  | 120     |
| CLEAN GRAIN ELEVATOR, GRAIN TANK AND UNLOADING AUGER . . . . . | 130     |
| HEADER HEIGHT CONTROL. . . . .                                 | 160     |
| DECALS, BELTS AND CHAINS . . . . .                             | 170     |
| NUMERICAL INDEX. . . . .                                       | 180     |

**Thanks very much for your reading,  
Want to get more information,  
Please click here, Then get the complete  
manual**

**JustClickHere** 

**NOTE:**

**If there is no response to click on the link above,  
please download the PDF document first, and then  
click on it.**

**Have any questions please write to me:  
[admin@servicemanualperfect.com](mailto:admin@servicemanualperfect.com)**

# 1A6

9501 PULL-TYPE COMBINE

## ALPHABETICAL INDEX

| GRID     |   | PAGE    | GRID     |  | PAGE    |
|----------|---|---------|----------|--|---------|
| <b>A</b> |   |         |          |  |         |
| 1F23     | ACCESS DOOR .....   | 80-4    | 2K9      | BELTS, STRAW SPREADER .....  | 170-3   |
| 1E6      | ACCUMULATOR, SINGLE .....   | 70-20   | 2K9      | BELTS, UNLOADING AUGERS.....   | 170-3   |
| 1E6      | ACCUMULATOR, SINGLE MOUNTING BRACKET .....  | 70-20   | 2K10     | BELTS, UNLOADING SYSTEM .....  | 170-4   |
| 1I9      | ACTUATOR, REVERSER.....   | 110-28  | 2K10     | BELTS, UPPER TAILINGS AUGER .....                                      | 170-4   |
| 1E16     | ADJUSTABLE STOP KIT, HEADER LIFT MODULE,<br>SOLENOID CONTROL VALVES .....         | 70-32   | 1E19     | BI-DIRECTIONAL MODULE, SOLENOID CONTROL<br>VALVE, CYLINDER SPEED ..... | 70-35   |
| 2D19     | ADJUSTING BRACKET, CYLINDER DRIVE,<br>DUAL-RANGE .....                            | 120-76  | 1C5      | BOARDS, ELECTRONIC .....   | 40-42   |
| 1C3      | ADJUSTING MOTOR, CONCAVE .....  | 40-40   | 2H24     | BOOT, CLEAN GRAIN LOWER ELEVATOR .....                                 | 130-4   |
| 1C1      | ADJUSTING MOTOR, SEPARATOR FAN DRIVE .....  | 40-38   | 1A22     | BOX, CONTROL, HARDWARE KIT .....                                       | 40-8    |
| 2D11     | ARM, LOCKOUT, DUAL-RANGE .....  | 120-68  | 1A18     | BOX, MAIN CONTROL.....   | 40-4    |
| 1E24     | ARMATURE KIT, SOLENOID CONTROL VALVE<br>DOUBLE PILOTED MODULE, AUGER SWING.....   | 70-40   | 1H5      | BOX, TOOL.....   | 80-36   |
| 1F2      | ARMATURE KIT, SOLENOID CONTROL VALVE<br>DOUBLE PILOTED MODULE, GRAIN TANK UN..... | 70-43   | 1I1      | BRACKET, FEEDER CONVEYOR.....  | 110-20  |
| 1E20     | ARMATURE KIT, SOLENOID CONTROL VALVE,<br>CYLINDER SPEED .....                     | 70-36   | 1E6      | BRACKET, SINGLE ACCUMULATOR MOUNTING .....                             | 70-20   |
| 2J20     | AUGER COVERS AND CHANNEL, CROSS .....   | 130-50  | 1B8      | BRACKET, STRAW CHOPPER SENSOR .....                                    | 40-20   |
| 1G9      | AUGER DRIVE MUD SHIELDS (R-H SIDE).....   | 80-14   | 2B9      | BRACKETS, CONCAVE INDICATOR .....                                      | 120-18  |
| 2H13     | AUGER DRIVE SHIELD, UPPER TAILINGS .....  | 120-168 | 1B14     | BRACKETS, LOW SHAFT SPEED MONITORS .....                               | 40-26   |
| 2H13     | AUGER DRIVE, UPPER TAILINGS.....  | 120-168 | 1B1      | BRACKETS, MAIN HITCH HARNESS .....                                     | 40-12   |
| 2J13     | AUGER HOUSING, HORIZONTAL UNLOADING<br>(14- AND 17-FT.) .....                     | 130-43  | 1B3      | BRACKETS, MAIN HITCH HARNESS .....                                     | 40-14   |
| 2I7      | AUGER HOUSING, LOADING, UPPER CLEAN<br>GRAIN.....                                 | 130-12  | 1F6      | BRACKETS, SOLENOID CONTROL VALVE .....                                 | 70-48   |
| 1E23     | AUGER SWING, SOLENOID CONTROL VALVE<br>DOUBLE PILOTED .....                       | 70-39   | 1A16     | BRKT., MTG., CONTROL BOX, DIAL-A-MATIC .....                           | 40-2    |
| 2J7      | AUGER SWIVEL SUPPORT AND BRACES.....  | 130-36  | <b>C</b> |  |         |
| 2H1      | AUGER TROUGH, LOWER TAILINGS .....  | 120-154 | 1C13     | CABLE, WIRING .....  | 40-50   |
| 1F11     | AUGER UNLOADING ENAGAGE SYSTEM .....  | 70-54   | 1C25     | CASE, GEAR .....   | 50-9    |
| 2J3      | AUGER, GRAIN TANK, VERTICAL UNLOADING .....                                       | 130-32  | 2J1      | CASE, VERTICAL AUGER LOWER GEAR .....                                  | 130-30  |
| 2J14     | AUGER, HORIZONTAL UNLOADING<br>(14- AND 17-FT.) .....                             | 130-44  | 2G11     | CHAFF SPREADER CONTROL, ROD AND KNOB .....                             | 120-140 |
| 2I9      | AUGER, LOADING, CLEAN GRAIN .....   | 130-14  | 2G1      | CHAFF SPREADER DISC AND DRIVE BELT .....                               | 120-130 |
| 2G23     | AUGER, LOWER TAILINGS .....   | 120-152 | 2G3      | CHAFF SPREADER FRAME, SHIELDS<br>AND HANDLES .....                     | 120-132 |
| 2K11     | AUGER, LOWER TAILINGS, BELTS .....  | 170-5   | 2G13     | CHAFF SPREADER LINES AND FITTINGS.....                                 | 120-142 |
| 2H13     | AUGER, UPPER TAILINGS.....  | 120-168 | 2G7      | CHAFF SPREADER MOUNTING SUPPORT .....                                  | 120-136 |
| 2J18     | AUGERS, GRAIN TANK CROSS .....  | 130-48  | 2G5      | CHAFF SPREADER PAN AND SEALS.....                                      | 120-134 |
| 2B15     | AUGERS, SHOE GRAIN SUPPLY AND HOUSING .....                                       | 120-24  | 2G15     | CHAFF SPREADER, HOSES, LINES AND MOTOR .....                           | 120-144 |
| 2B17     | AUGERS, SHOE GRAIN SUPPLY AND HOUSING .....                                       | 120-26  | 2G17     | CHAFF SPREADER, MOTOR .....  | 120-146 |
| <b>B</b> |   |         |          |  |         |
| 2I21     | BASE, GRAIN TANK .....  | 130-26  | 2G19     | CHAFF SPREADER, PUMP.....  | 120-148 |
| 2H5      | BEARINGS, TAILINGS ELEVATOR CONVEYOR.....   | 120-158 | 2G21     | CHAFF SPREADER, PUMP SEAL KIT.....                                     | 120-150 |
| 2K10     | BEATER BELTS SHEAVES.....   | 170-4   | 2C3      | CHAFFER ELEMENT .....  | 120-36  |
| 2B13     | BEATER COVER .....  | 120-22  | 2C5      | CHAFFER EXTENSION ELEMENT.....   | 120-38  |
| 2E5      | BEATER DRIVE SHEAVES AND TIGHTENER .....  | 120-86  | 2C7      | CHAFFER FRAME .....  | 120-40  |
| 2B11     | BEATER SHAFT AND DRIVE BELT .....   | 120-20  | 2C1      | CHAFFER FRAME, PRE-CLEANER .....                                       | 120-34  |
| 2J23     | BELT GUIDE, UNLOADING AUGER DRIVE .....   | 130-54  | 2B23     | CHAFFER, PRE-CLEANING .....  | 120-32  |
| 2E17     | BELT PICKUP / REEL DRIVE, PUMP MOUNTING<br>SHEAVE .....                           | 120-98  | 2H12     | CHAIN TIGHTENER, UPPER TAILINGS DRIVE .....                            | 120-166 |
| 1F17     | BELT TIGHTENING CYLINDER .....  | 70-60   | 2I1      | CHAIN, CONVEYOR, CLEAN GRAIN LOWER<br>ELEVATOR.....                    | 130-6   |
| 2B11     | BELT, DRIVE, SHAFT AND BEATER.....  | 120-20  | 1I1      | CHAIN, FEEDER CONVEYOR DRIVE .....                                     | 110-20  |
| 2K10     | BELTS, BEATER .....   | 170-4   | 2H5      | CHAIN, TAILINGS ELEVATOR CONVEYOR .....                                | 120-158 |
| 2K11     | BELTS, CLEAN GRAIN ELEVATOR .....   | 170-5   | 2J20     | CHANNEL, CROSS AUGER .....   | 130-50  |
| 2K11     | BELTS, CYLINDER DRIVE .....   | 170-5   | 2J3      | CHARGE HOUSING, VERTICAL UNLOADING AUGER ....                          | 130-32  |
| 2K11     | BELTS, DRIVE, CYLINDER INTERMEDIATE .....   | 170-5   | 2G9      | CHOPPER DRIVE IDLER .....  | 120-138 |
| 2K9      | BELTS, FAN, CLEANING.....   | 170-3   | 2E23     | CHOPPER DRIVE SHIELDS, STRAW<br>( -640400) .....                       | 120-104 |
| 2K9      | BELTS, FEEDER HOUSE .....   | 170-3   | 2I1      | CLEAN GRAIN CONVEYOR CHAIN .....                                       | 130-6   |
| 2K9      | BELTS, HEADER AND REEL .....  | 170-3   | 2I13     | CLEAN GRAIN ELEVATOR DRIVE IDLER.....                                  | 130-18  |
| 2K10     | BELTS, LOWER TAILINGS AUGER .....   | 170-4   | 2I13     | CLEAN GRAIN ELEVATOR DRIVE TIGHTENER.....                              | 130-18  |
| 2K11     | BELTS, LOWER TAILINGS AUGER.....  | 170-5   | 2I13     | CLEAN GRAIN ELEVATOR DRIVE TIGHTENER AND<br>IDLER .....                | 130-18  |
| 2K9      | BELTS, STRAW CHOPPER.....   | 170-3   | 2I11     | CLEAN GRAIN ELEVATOR GEARCASE .....                                    | 130-16  |
|          |   |         | 2I15     | CLEAN GRAIN ELEVATOR SHIELDS, UPPER<br>( -640400) .....                | 130-20  |
|          |   |         | 2I17     | CLEAN GRAIN ELEVATOR SHIELDS, UPPER<br>(640401- ) .....                | 130-22  |
|          |   |         | 2I5      | CLEAN GRAIN ELEVATOR UPPER SHAFT .....                                 | 130-10  |
|          |   |         | 2I5      | CLEAN GRAIN ELEVATOR UPPER SHAFT,<br>SPROCKET AND SHEAVE .....         | 130-10  |
|          |   |         | 2I5      | CLEAN GRAIN ELEVATOR UPPER SHEAVE .....                                | 130-10  |

# 1A7

9501 PULL-TYPE COMBINE

## ALPHABETICAL INDEX - CONTINUED

| GRID |   | PAGE    | GRID |   | PAGE    |
|------|---|---------|------|---|---------|
| 2I5  | CLEAN GRAIN ELEVATOR UPPER SPROCKET .....                       | 130-10  | 1E11 | CYLINDER SPEED HYDRAULIC LINES AND HOSES .....                        | 70-26   |
| 2I3  | CLEAN GRAIN ELEVATOR, UPPER .....                               | 130-8   | 1E20 | CYLINDER SPEED SOLENOID<br>CONTROL VALVE ARMATURE KIT .....           | 70-36   |
| 2I9  | CLEAN GRAIN LOADING AUGER .....                                 | 130-14  | 1E21 | CYLINDER SPEED SOLENOID<br>CONTROL VALVE POPPET KIT .....             | 70-37   |
| 2I7  | CLEAN GRAIN LOADING AUGER HOUSING, UPPER .....                  | 130-12  | 1E19 | CYLINDER SPEED, SOLENOID<br>CONTROL VALVE .....                       | 70-35   |
| 2H22 | CLEAN GRAIN LOWER AUGER .....                                   | 130-2   | 1E4  | CYLINDER, HEADER LIFT, HYDRAULIC .....                                | 70-18   |
| 2H22 | CLEAN GRAIN LOWER AUGER AND HINGED DOOR .....                   | 130-2   | 1F18 | CYLINDER, HITCH TUBE HYDRAULIC .....                                  | 70-61   |
| 2H24 | CLEAN GRAIN LOWER ELEVATOR .....                                | 130-4   | 1F17 | CYLINDER, HYDRAULIC BELT TIGHTENING .....                             | 70-60   |
| 2I1  | CLEAN GRAIN LOWER ELEVATOR .....                                | 130-6   | 1F9  | CYLINDER, HYDRAULIC, UNLOADING AUGER<br>SWING, LINES AND HOSES .....  | 70-52   |
| 2I1  | CLEAN GRAIN LOWER ELEVATOR AND CONVEYOR<br>CHAIN .....          | 130-6   | 2B3  | CYLINDER, THRESHING, RASP BAR .....                                   | 120-12  |
| 2H24 | CLEAN GRAIN LOWER ELEVATOR BOOT AND DOOR ..                     | 130-4   | 1F13 | CYLINDER, UNLOADING AUGER SWING<br>HYDRAULIC .....                    | 70-56   |
| 2E7  | CLEANING FAN DRIVE, SEPARATOR .....                             | 120-88  |      |   |         |
| 2B19 | CLEANING FAN INTAKE SHIELDS .....                               | 120-28  |      | <b>D</b>  |         |
| 2B21 | CLEANING FAN INTAKE SHIELDS .....                               | 120-30  | 2K15 | DECALS, FRONT .....   | 170-10  |
| 2B19 | CLEANING FANS AND SHROUDS .....                                 | 120-28  | 2K13 | DECALS, LEFT-HAND .....   | 170-8   |
| 2B21 | CLEANING FANS AND SHROUDS .....                                 | 120-30  | 2K15 | DECALS, REAR .....  | 170-10  |
| 2A18 | CLEANOUT DOOR, CONVEYOR AUGER, HANDLE<br>AND LATCHES .....      | 120-2   | 2K12 | DECALS, RIGHT-HAND .....  | 170-7   |
| 1H13 | CLEANOUT DOORS, FEEDER HOUSE .....                              | 110-8   | 2F3  | DECK, SUPPORTS AND FINS, STRAW CHOPPER .....                          | 120-108 |
| 2D3  | CLUTCH, HEADER ELECTOMAGNETIC .....                             | 120-60  | 2F17 | DEFLECTORS AND CORN CURTAIN .....                                     | 120-122 |
| 1I7  | CLUTCH, SLIP, FEEDER HOUSE .....                                | 110-26  | 2K5  | DIAL-A-MATIC ELECTRICAL HARNESS .....                                 | 160-4   |
| 1C3  | CONCAVE ADJUSTING MOTOR .....                                   | 40-40   | 2G1  | DISC AND DRIVE BELT, CHAFF SPREADER .....                             | 120-130 |
| 2B9  | CONCAVE INDICATOR, BRACKETS .....                               | 120-18  | 1F23 | DOOR, ACCESS .....  | 80-4    |
| 2B5  | CONCAVE, RASP BAR AND GRATE .....                               | 120-14  | 2F19 | DOOR, CHOPPER STRAW .....   | 120-124 |
| 2B7  | CONCAVE, RASP BAR AND GRATE .....                               | 120-16  | 2H22 | DOOR, CLEAN GRAIN LOWER AUGER .....                                   | 130-2   |
| 1C7  | CONNECTORS, ELECTRICAL, WEATHERPACK .....                       | 40-44   | 2H24 | DOOR, CLEAN GRAIN LOWER ELEVATOR .....                                | 130-4   |
| 1C15 | CONNECTORS, SUPPLEMENTARY TERMINALS .....                       | 40-52   | 1G24 | DOOR, CORNER SHEET, LEFT - HAND FRONT .....                           | 80-30   |
| 1A22 | CONTROL BOX HARDWARE KIT .....                                  | 40-8    | 2A24 | DOOR, CYLINDER .....  | 120-8   |
| 1A16 | CONTROL BOX HOUSING, DIAL-A-MATIC .....                         | 40-2    | 1G16 | DOOR, L.H. GULL WING .....  | 80-22   |
| 1A16 | CONTROL BOX WIRING HARNESS, DIAL-A-MATIC .....                  | 40-2    | 2F19 | DOOR, STRAW CHOPPER .....   | 120-124 |
| 1A18 | CONTROL BOX, MAIN .....   | 40-4    | 1G18 | DOORS, R.H. GULL WING .....   | 80-24   |
| 1A20 | CONTROL BOX, MAIN, HARVESTRAK .....                             | 40-6    | 1E23 | DOUBLE PILOTED, AUGER SWING, SOLENOID<br>CONTROL VALVE .....          | 70-39   |
| 2A18 | CONVEYOR AUGER CLEANOUT DOOR, HANDLE AND<br>LATCHES .....       | 120-2   | 1F1  | DOUBLE PILOTED, GRAIN TANK UNLOADING,<br>SOLENOID CONTROL VALVE ..... | 70-42   |
| 2E3  | CONVEYOR AUGERS, STRAW WALKER, SIEVE AND<br>CHAFFER DRIVE ..... | 120-84  | 1C17 | DRAWBAR EXTENSION .....   | 50-1    |
| 2I1  | CONVEYOR CHAIN, CLEAN GRAIN .....                               | 130-6   | 2G1  | DRIVE BELT AND DISC, CHAFF SPREADER .....                             | 120-130 |
| 2F17 | CORN CURTAIN AND DEFLECTORS .....                               | 120-122 | 2J23 | DRIVE BELT GUIDE, UNLOADING AUGER .....                               | 130-54  |
| 1G20 | CORNER SHEET, R H FRONT .....                                   | 80-26   | 2H6  | DRIVE BRACKET, TAILINGS .....   | 120-159 |
| 1G22 | CORNER SHEET, REAR, L H .....                                   | 80-28   | 2H12 | DRIVE CHAIN TIGHTENER, UPPER TAILINGS .....                           | 120-166 |
| 2D21 | COUNTERSHAFT DRIVE, SECONDARY .....                             | 120-78  | 2E1  | DRIVE GEARCASE, STRAW WALKER .....                                    | 120-82  |
| 2J21 | COUNTERSHAFT DRIVE, UNLOADING AUGER .....                       | 130-52  | 2I13 | DRIVE IDLER, CLEAN GRAIN ELEVATOR .....                               | 130-18  |
| 2B13 | COVER, BEATER .....   | 120-22  | 1G12 | DRIVE SHIELD, R.H. REAR .....   | 80-18   |
| 2A20 | COVER, THRESHING CYLINDER .....                                 | 120-4   | 1H11 | DRIVE SHIELDS, SAFETY STOP, FEEDER HOUSE .....                        | 110-6   |
| 2J20 | COVERS AND CHANNEL, CROSS AUGER .....                           | 130-50  | 2E23 | DRIVE SHIELDS, STRAW CHOPPER<br>( -640400) .....                      | 120-104 |
| 2C21 | CRANKS, STRAW WALKER, STRAW SPREADER<br>DRIVE AND SHIELD .....  | 120-54  | 2F1  | DRIVE SHIELDS, STRAW CHOPPER<br>(640401- ) .....                      | 120-106 |
| 2J16 | CROSS AUGER BEARING PLATE, L.H. .....                           | 130-46  | 2I13 | DRIVE TIGHTENER, CLEAN GRAIN ELEVATOR .....                           | 130-18  |
| 2J20 | CROSS AUGER COVERS AND CHANNEL .....                            | 130-50  | 2E15 | DRIVE TIGHTENER, FEEDER HOUSE .....                                   | 120-96  |
| 2J18 | CROSS AUGERS, GRAIN TANK .....                                  | 130-48  | 1H9  | DRIVE TIGHTENER, FIXED SPEED FEEDER<br>HOUSE .....                    | 110-4   |
| 1F21 | CROSS BRACES, SEPARATOR .....                                   | 80-2    | 2E17 | DRIVE, BELT PICKUP / REEL PUMP<br>MOUNTING SHEAVE .....               | 120-98  |
| 2C23 | CURTAIN, SEPARATOR .....  | 120-56  | 2E7  | DRIVE, CLEANING FAN, SEPARATOR .....                                  | 120-88  |
| 2D1  | CURTAIN, SEPARATOR .....  | 120-58  | 2J21 | DRIVE, COUNTERSHAFT, UNLOADING AUGER .....                            | 130-52  |
| 2A20 | CYLINDER COVER, THRESHING .....                                 | 120-4   | 2K11 | DRIVE, CYLINDER INTERMEDIATE, BELTS .....                             | 170-5   |
| 2A24 | CYLINDER DOOR .....   | 120-8   | 2K11 | DRIVE, CYLINDER, BELTS .....  | 170-5   |
| 2D19 | CYLINDER DRIVE ADJUSTING BRACKET,<br>DUAL-RANGE .....           | 120-76  | 2E13 | DRIVE, FAN, SPEED CONTROL SHEAVE LINKAGE .....                        | 120-94  |
| 2D9  | CYLINDER DRIVE GEAR CASE, DUAL-RANGE .....                      | 120-66  | 2D23 | DRIVE, GEARCASE, STRAW WALKER .....                                   | 120-80  |
| 2D15 | CYLINDER DRIVE INTERMEDIATE SHAFT<br>MOUNTING, DUAL-RANGE ..... | 120-72  | 1D1  | DRIVE, LOWER IDLER .....  | 50-10   |
| 2D17 | CYLINDER DRIVE INTERMEDIATE SHEAVE,<br>DUAL-RANGE .....         | 120-74  | 1D5  | DRIVE, MAIN, IDLER .....  | 50-14   |
| 1E22 | CYLINDER DRIVE SOLENOID<br>CONTROL VALVE RELIEF KIT .....       | 70-38   |      |   |         |
| 2D13 | CYLINDER DRIVE TIGHTENER, DUAL-RANGE .....                      | 120-70  |      |   |         |
| 2D7  | CYLINDER DRIVE, SINGLE RANGE .....                              | 120-64  |      |   |         |
| 2B1  | CYLINDER SHEAR BAR .....  | 120-10  |      |   |         |

## ALPHABETICAL INDEX - CONTINUED

| GRID     |  | PAGE    | GRID     |   | PAGE    |
|----------|--|---------|----------|---|---------|
| 1D20     | DRIVE, REEL, FLOW CONTROL VALVE .....                          | 70-8    | 1H11     | FEEDER HOUSE DRIVE SHIELDS AND SAFETY<br>STOP .....                                 | 110-6   |
| 2D21     | DRIVE, SECONDARY COUNTERSHAFT .....                            | 120-78  | 2E15     | FEEDER HOUSE DRIVE TIGHTENER .....  | 120-96  |
| 2E19     | DRIVES, STRAW CHOPPER (FRONT) .....                            | 120-100 | 1H9      | FEEDER HOUSE DRIVE TIGHTENER (FIXED<br>SPEED).....                                  | 110-4   |
| 2E21     | DRIVES, STRAW CHOPPER (REAR).....                              | 120-102 | 1H23     | FEEDER HOUSE FLOOR .....  | 110-18  |
| 1B20     | DUAL LEVEL MONITOR .....                                       | 40-32   | 1H13     | FEEDER HOUSE FRAME .....  | 110-8   |
| 1B20     | DUAL LEVEL MONITOR WIRING HARNESS .....                        | 40-32   | 1H21     | FEEDER HOUSE FRONT DRIVE SHAFT, SHEAVE<br>AND MOUNTINGS (FIXED SPEED WITH .....     | 110-16  |
| 2D19     | DUAL-RANGE CYLINDER DRIVE ADJUSTING<br>BRACKET .....           | 120-76  | 1I7      | FEEDER HOUSE SLIP CLUTCH .....  | 110-26  |
| 2D9      | DUAL-RANGE CYLINDER DRIVE GEAR CASE .....                      | 120-66  | 1H17     | FEEDER HOUSE UPPER DRIVE SHAFT, SHEAVE<br>AND MOUNTING (FIXED SPEED WITH .....      | 110-12  |
| 2D15     | DUAL-RANGE CYLINDER DRIVE INTERMEDIATE<br>SHAFT MOUNTING ..... | 120-72  | 1H15     | FEEDER HOUSE UPPER SHAFT.....   | 110-10  |
| 2D17     | DUAL-RANGE CYLINDER DRIVE INTERMEDIATE<br>SHEAVE .....         | 120-74  | 2A22     | FEEDER HOUSE/SEPARATOR SEAL, STONE<br>TRAP AND DOOR .....                           | 120-6   |
| 2D13     | DUAL-RANGE CYLINDER DRIVE TIGHTENER.....                       | 120-70  | 1E1      | FILTER, MAIN HYDRAULIC.....   | 70-14   |
| 2D11     | DUAL-RANGE LOCKOUT ARM.....                                    | 120-68  | 2F3      | FINS, SUPPORTS AND DECK, STRAW CHOPPER .....  | 120-108 |
| <b>E</b> |  |         |          |   |         |
| 1C9      | ELECTRICAL CONNECTOR SERVICE KIT .....                         | 40-46   | 1H9      | FIXED SPEED FEEDER HOUSE DRIVE TIGHTENER .....                                      | 110-4   |
| 1C11     | ELECTRICAL CONNECTOR SERVICE KIT .....                         | 40-48   | 1H23     | FLOOR, FEEDER HOUSE .....   | 110-18  |
| 2K5      | ELECTRICAL HARNESS, DIAL-A-MATIC .....                         | 160-4   | 1D20     | FLOW CONTROL VALVE, REEL DRIVE .....  | 70-8    |
| 1C7      | ELECTRICAL TERMINALS AND CONNECTORS,<br>WEATHERPACK .....      | 40-44   | 2C7      | FRAME, CHAFFER .....  | 120-40  |
| 2D3      | ELECTROMAGNETIC CLUTCH, HEADER .....                           | 120-60  | 1H13     | FRAME, FEEDER HOUSE.....  | 110-8   |
| 1C5      | ELECTRONIC BOARDS.....   | 40-42   | 1F21     | FRAME, SEPARATOR.....   | 80-2    |
| 1C5      | ELECTRONIC HOUSING ASSEMBLY AND<br>ELECTRONIC BOARDS .....     | 40-42   | 2G3      | FRAME, SHIELDS AND HANDLES,<br>CHAFF SPREADER.....                                  | 120-132 |
| 2C3      | ELEMENT, CHAFFER .....   | 120-36  | 2C11     | FRAME, SIEVE.....   | 120-44  |
| 2C5      | ELEMENT, CHAFFER EXTENSION .....                               | 120-38  | 1B22     | FRONT AND REAR TURN AND TAIL LIGHTS .....   | 40-34   |
| 2C9      | ELEMENT, SIEVE .....   | 120-42  | 1G20     | FRONT CORNER SHEET, R H.....  | 80-26   |
| 2I13     | ELEVATOR DRIVE IDLER, CLEAN GRAIN .....                        | 130-18  | 1H13     | FRONT FEEDER HOUSE .....  | 110-8   |
| 2I13     | ELEVATOR DRIVE TIGHTENER, CLEAN GRAIN .....                    | 130-18  | <b>G</b> |   |         |
| 2I15     | ELEVATOR SHIELDS, UPPER CLEAN GRAIN<br>( -640400) .....        | 130-20  | 1H7      | GEAR BOX, REVERSER .....  | 110-2   |
| 2I17     | ELEVATOR SHIELDS, UPPER CLEAN GRAIN<br>(640401- ) .....        | 130-22  | 1C25     | GEAR CASE .....   | 50-9    |
| 2K11     | ELEVATOR, CLEAN GRAIN BELTS .....                              | 170-5   | 2D9      | GEAR CASE, DUAL-RANGE CYLINDER DRIVE .....  | 120-66  |
| 2H24     | ELEVATOR, LOWER, CLEAN GRAIN .....                             | 130-4   | 2J1      | GEAR CASE, VERTICAL AUGER LOWER .....   | 130-30  |
| 2I1      | ELEVATOR, LOWER, CLEAN GRAIN .....                             | 130-6   | 1C25     | GEAR CASE, WITH GEARS AND SHAFTS.....   | 50-9    |
| 2I3      | ELEVATOR, UPPER CLEAN GRAIN .....                              | 130-8   | 2D23     | GEARCASE DRIVE, STRAW WALKER .....  | 120-80  |
| 2C5      | EXTENSION ELEMENT, CHAFFER .....                               | 120-38  | 1D3      | GEARCASE TOP IDLER .....  | 50-12   |
| 1C17     | EXTENSION, DRAWBAR.....  | 50-1    | 2I11     | GEARCASE, CLEAN GRAIN ELEVATOR.....   | 130-16  |
| 2I23     | EXTENSIONS, GRAIN TANK .....                                   | 130-28  | 2E1      | GEARCASE, DRIVE, STRAW WALKER.....  | 120-82  |
| <b>F</b> |  |         |          |   |         |
| 1G11     | FAN DRIVE SHIELD (L-H SIDE).....                               | 80-16   | 2J11     | GEARCASE, HORIZONTAL UNLOADING AUGER<br>DRIVE .....                                 | 130-40  |
| 1G11     | FAN DRIVE SHIELDS (L-H SIDE).....                              | 80-16   | 2I21     | GRAIN TANK BASE .....   | 130-26  |
| 2E9      | FAN DRIVE SPEED CONTROL LINKAGE<br>( -640400) .....            | 120-90  | 2J18     | GRAIN TANK CROSS AUGERS .....   | 130-48  |
| 2E11     | FAN DRIVE SPEED CONTROL LINKAGE<br>(640401- ) .....            | 120-92  | 1B20     | GRAIN TANK DUAL LEVEL MONITOR HARNESS .....   | 40-32   |
| 2E13     | FAN DRIVE SPEED CONTROL SHEAVE LINKAGE .....                   | 120-94  | 2I23     | GRAIN TANK EXTENSIONS .....   | 130-28  |
| 2K9      | FAN, CLEANING, BELTS.....                                      | 170-3   | 1B18     | GRAIN TANK LEVEL MONITOR .....  | 40-30   |
| 2E7      | FAN, DRIVE, CLEANING, SEPARATOR .....                          | 120-88  | 1B18     | GRAIN TANK LIGHT .....  | 40-30   |
| 2B19     | FANS, CLEANING .....   | 120-28  | 2I19     | GRAIN TANK TOP .....  | 130-24  |
| 2B21     | FANS, CLEANING .....   | 120-30  | 1B18     | GRAIN TANK UNLOADING AUGER LIMIT SWITCH.....  | 40-30   |
| 1I5      | FEED PLATE SUPPORT .....                                       | 110-24  | 1F2      | GRAIN TANK UNLOADING, KIT, ARMATURE,<br>SOLENOID CONTROL VALVE DOUBLE PILOTED ..... | 70-43   |
| 1I1      | FEEDER CONVEYOR BRACKET .....                                  | 110-20  | 1F1      | GRAIN TANK UNLOADING, SOLENOID CONTROL<br>VALVE DOUBLE PILOTED .....                | 70-42   |
| 1I1      | FEEDER CONVEYOR DRIVE CHAIN.....                               | 110-20  | 2J3      | GRAIN TANK VERTICAL UNLOADING AUGER .....   | 130-32  |
| 1I3      | FEEDER CONVEYOR DRIVE CHAIN, TIGHTENER<br>AND GUIDES .....     | 110-22  | 2J3      | GRAIN TANK VERTICAL UNLOADING AUGER<br>HOUSING .....                                | 130-32  |
| 1I1      | FEEDER CONVEYOR IDLER .....                                    | 110-20  | 1B18     | GRAIN TANK WIRING HARNESS, LIGHT, LIMIT<br>SWITCH AND LEVEL MONITOR .....           | 40-30   |
| 2K9      | FEEDER HOUSE BELTS.....  | 170-3   | 2B5      | GRATE AND RASP BAR CONCAVE .....  | 120-14  |
|          |  |         | 2B7      | GRATE AND RASP BAR CONCAVE .....  | 120-16  |
|          |  |         | 2F21     | GUARD AND STRAW SPREADER MOUNTING .....   | 120-126 |
|          |  |         | 1I3      | GUIDES, TIGHTENER AND FEEDER CONVEYOR<br>DRIVE CHAIN .....                          | 110-22  |
|          |  |         | 1G16     | GULL WING DOORS, L.H. ....  | 80-22   |



# 1A9

9501 PULL-TYPE COMBINE

## ALPHABETICAL INDEX - CONTINUED

| GRID     | PAGE  | GRID    | PAGE |
|----------|---|---------|------|
| 1G18     | GULL WING DOORS, R.H. ....  | 80-24   |      |
| <b>H</b> |   |         |      |
| 2A18     | HANDLE, LATCHES AND CONVEYOR AUGER<br>CLEANOUT DOOR .....                         | 120-2   |      |
| 1F23     | HANDRAILS, REAR LADDER LANDING .....  | 80-4    |      |
| 1A22     | HARDWARE KIT, CONTROL BOX .....   | 40-8    |      |
| 1B8      | HARNES FOR REAR LIGHTS AND SHIELDS .....  | 40-20   |      |
| 1B6      | HARNES WIRING, MAIN, L.H. CENTER .....  | 40-18   |      |
| 1A24     | HARNES, HITCH TUBE .....  | 40-10   |      |
| 1B4      | HARNES, WIRING, MAIN, L.H. FRONT .....  | 40-16   |      |
| 1B10     | HARNES, WIRING, R.H. MAIN .....   | 40-22   |      |
| 1A20     | HARVESTRAK MAIN CONTROL BOX .....   | 40-6    |      |
| 1B16     | HARVESTRAK MONITOR WIRING HARNES .....  | 40-28   |      |
| 2K9      | HEADER BELTS .....  | 170-3   |      |
| 2D3      | HEADER ELECTROMAGNETIC CLUTCH .....   | 120-60  |      |
| 2K5      | HEADER HEIGHT CONTROL, ELECTRIC<br>HARNES, DIAL-A-MATIC .....                     | 160-4   |      |
| 1E4      | HEADER LIFT CYLINDER, HYDRAULIC .....   | 70-18   |      |
| 1E5      | HEADER LIFT HYDRAULIC CYLINDER KIT .....  | 70-19   |      |
| 1E2      | HEADER LIFT LINES AND HOSES .....   | 70-16   |      |
| 1E17     | HEADER LIFT MODULE, ARMATURE KIT .....  | 70-33   |      |
| 1E18     | HEADER LIFT MODULE, POPPET KIT .....  | 70-34   |      |
| 1E14     | HEADER LIFT MODULE, SOLENOID CONTROL<br>VALVE .....                               | 70-30   |      |
| 1B23     | HEADER LIGHT .....  | 40-36   |      |
| 2H22     | HINGED DOOR, LOWER AUGER, CLEAN GRAIN .....                                       | 130-2   |      |
| 1C18     | HITCH .....   | 50-2    |      |
| 1D15     | HITCH BEAM HYDRAULIC LINES AND HOSES .....  | 70-3    |      |
| 1C20     | HITCH BEAM JACK STAND .....   | 50-4    |      |
| 1D14     | HITCH HYDRAULIC HOSES .....   | 70-2    |      |
| 1D14     | HITCH HYDRAULIC LINES .....   | 70-2    |      |
| 1A24     | HITCH TUBE HARNES AND SHORT TURN SENSOR .....                                     | 40-10   |      |
| 1F18     | HITCH TUBE HYDRAULIC CYLINDER .....   | 70-61   |      |
| 1B1      | HITCH, MAIN HARNES ASSEMBLY .....   | 40-12   |      |
| 1B3      | HITCH, MAIN HARNES ASSEMBLY .....   | 40-14   |      |
| 1D7      | HOLDER, HOSE .....  | 50-16   |      |
| 1G7      | HOOD, REAR .....  | 80-12   |      |
| 2J14     | HORIZONTAL UNLOADING AUGER<br>(14- AND 17-FT.) .....                              | 130-44  |      |
| 2J9      | HORIZONTAL UNLOADING AUGER<br>HUB SUPPORT .....                                   | 130-38  |      |
| 2J11     | HORIZONTAL UNLOADING AUGER DRIVE<br>GEARCASE .....                                | 130-40  |      |
| 2J12     | HORIZONTAL UNLOADING AUGER HOUSING<br>(14- AND 17-FT.) .....                      | 130-42  |      |
| 2J13     | HORIZONTAL UNLOADING AUGER HOUSING<br>(14- AND 17-FT.) .....                      | 130-43  |      |
| 2J5      | HORIZONTAL UNLOADING AUGER SWIVEL .....   | 130-34  |      |
| 1D7      | HOSE HOLDER .....   | 50-16   |      |
| 1E2      | HOSES AND LINES, HEADER LIFT .....  | 70-16   |      |
| 1E11     | HOSES AND LINES, HYDRAULIC, CYLINDER<br>SPEED .....                               | 70-26   |      |
| 1F9      | HOSES AND LINES, UNLOADING AUGER SWING<br>HYDRAULIC CYLINDER .....                | 70-52   |      |
| 2G17     | HOSES, CHAFF SPREADER .....   | 120-146 |      |
| 1D15     | HOSES, HITCH BEAM HYDRAULIC .....   | 70-3    |      |
| 1D14     | HOSES, HITCH HYDRAULIC .....  | 70-2    |      |
| 1D24     | HOSES, HYDRAULIC, REEL PUMP .....   | 70-12   |      |
| 2G15     | HOSES, LINES AND MOTOR, CHAFF SPREADER .....                                      | 120-144 |      |
| 2H17     | HOSES, LUBE, L.H. .....   | 120-172 |      |
| 2H15     | HOSES, LUBE, R. H. .....  | 120-170 |      |
| 2F11     | HOUSING AND KNIFEBACK, STRAW CHOPPER<br>( -640400) .....                          | 120-116 |      |
| 2F13     | HOUSING AND KNIFEBACK, STRAW CHOPPER<br>(640401- ) .....                          | 120-118 |      |
| 2F15     | HOUSING AND KNIFEBACK, STRAW CHOPPER<br>(640401- ) .....                          | 120-120 |      |
| 2B15     | HOUSING AND SHOE GRAIN SUPPLY AUGERS .....  | 120-24  |      |
| 2B17     | HOUSING AND SHOE GRAIN SUPPLY AUGERS .....  | 120-26  |      |
| 2J3      | HOUSING, CHARGE, VERTICAL UNLOADING<br>AUGER .....                                | 130-32  |      |
| 1A16     | HOUSING, CONTROL BOX, DIAL-A-MATIC .....  | 40-2    |      |
| 1C5      | HOUSING, ELECTRONIC ASSEMBLY .....  | 40-42   |      |
| 2J12     | HOUSING, HORIZONTAL UNLOADING AUGER<br>(14- AND 17-FT.) .....                     | 130-42  |      |
| 2J13     | HOUSING, HORIZONTAL UNLOADING AUGER<br>(14- AND 17-FT.) .....                     | 130-43  |      |
| 1D10     | HOUSING, SPINDLE, AND WHEEL .....   | 50-19   |      |
| 2H3      | HOUSING, TAILINGS ELEVATOR .....  | 120-156 |      |
| 2H10     | HOUSING, UPPER TAILINGS AUGER .....   | 120-164 |      |
| 1F17     | HYDRAULIC BELT TIGHTENING CYLINDER .....  | 70-60   |      |
| 1F18     | HYDRAULIC CYLINDER, HITCH TUBE .....  | 70-61   |      |
| 1F13     | HYDRAULIC CYLINDER, UNLOADING AUGER<br>SWING .....                                | 70-56   |      |
| 1D24     | HYDRAULIC HOSES, REEL PUMP .....  | 70-12   |      |
| 1E11     | HYDRAULIC LINES AND HOSES, CYLINDER<br>SPEED .....                                | 70-26   |      |
| 1E2      | HYDRAULIC LINES AND HOSES, HEADER LIFT .....                                      | 70-16   |      |
| 1D15     | HYDRAULIC LINES AND HOSES, HITCH BEAM .....                                       | 70-3    |      |
| 1F13     | HYDRAULIC MOUNTING, UNLOADING AUGER<br>SWING .....                                | 70-56   |      |
| 1E8      | HYDRAULIC RETURN LINES .....  | 70-22   |      |
| 1E10     | HYDRAULIC/HYDROSTATIC OIL RESERVOIR .....   | 70-24   |      |
| 1E1      | HYDRAULIC, MAIN, FILTER .....   | 70-14   |      |
| 1E10     | HYDROSTATIC/HYDRAULIC RESERVOIR .....   | 70-24   |      |
| <b>I</b> |   |         |      |
| 2G9      | IDLER, CHOPPER DRIVE .....  | 120-138 |      |
| 2I13     | IDLER, DRIVE, CLEAN GRAIN ELEVATOR .....  | 130-18  |      |
| 1D1      | IDLER, DRIVE, LOWER .....   | 50-10   |      |
| 1I1      | IDLER, FEEDER CONVEYOR .....  | 110-20  |      |
| 1D3      | IDLER, GEARCASE .....   | 50-12   |      |
| 1D5      | IDLER, MAIN DRIVE .....   | 50-14   |      |
| 2B9      | INDICATOR BRACKETS, CONCAVE .....   | 120-18  |      |
| 2B19     | INTAKE SHIELDS, CLEANING FAN .....  | 120-28  |      |
| 2B21     | INTAKE SHIELDS, CLEANING FAN .....  | 120-30  |      |
| 2D15     | INTERMEDIATE SHAFT MOUNTING, CYLINDER<br>DRIVE, DUAL-RANGE .....                  | 120-72  |      |
| 2D17     | INTERMEDIATE SHEAVE, CYLINDER DRIVE,<br>DUAL-RANGE .....                          | 120-74  |      |
| <b>J</b> |   |         |      |
| 1C20     | JACK STAND, HITCH BEAM .....  | 50-4    |      |
| 1F20     | JACKSTAND, REAR .....   | 80-1    |      |
| 1C22     | JOINT, UNIVERSAL, REAR .....  | 50-6    |      |
| <b>K</b> |   |         |      |
| 2H19     | KEY STOCK, METRIC KIT .....   | 120-174 |      |
| 1E16     | KIT, ADJUSTABLE STOP, HEADER LIFT MODULE .....                                    | 70-32   |      |
| 1D23     | KIT, ADJUSTING SCREW, REEL DRIVE FLOW<br>CONTROL VALVE .....                      | 70-11   |      |
| 1E24     | KIT, ARMATURE, SOLENOID CONTROL VALVE<br>DOUBLE PILOTED MODULE, AUGER SWING ..... | 70-40   |      |

# 1A10

9501 PULL-TYPE COMBINE

## ALPHABETICAL INDEX - CONTINUED

| GRID     | PAGE  | GRID    | PAGE |
|----------|---|---------|------|
| 1F2      | KIT, ARMATURE, SOLENOID CONTROL VALVE<br>DOUBLE PILOTED MODULE, GRAIN TANK UN. .... | 70-43   |      |
| 1E20     | KIT, ARMATURE, SOLENOID CONTROL VALVE,<br>CYLINDER SPEED .....                      | 70-36   |      |
| 1E17     | KIT, ARMATURE, SOLENOID CONTROL VALVES,<br>HEADER LIFT MODULE .....                 | 70-33   |      |
| 1A22     | KIT, CONTROL BOX HARDWARE .....   | 40-8    |      |
| 1C9      | KIT, ELECTRICAL CONNECTOR SERVICE.....  | 40-46   |      |
| 1C11     | KIT, ELECTRICAL CONNECTOR SERVICE.....  | 40-48   |      |
| 1E5      | KIT, HEADER LIFT HYDRAULIC CYLINDER.....  | 70-19   |      |
| 2H19     | KIT, METRIC KEY STOCK .....   | 120-174 |      |
| 1E25     | KIT, POPPET, SOLENOID CONTROL VALVE<br>DOUBLE PILOTED MODULE, AUGER SWING.....      | 70-41   |      |
| 1F3      | KIT, POPPET, SOLENOID CONTROL VALVE<br>DOUBLE PILOTED MODULE, REEL FORE/AFT.....    | 70-44   |      |
| 1E18     | KIT, POPPET, SOLENOID CONTROL VALVE<br>UNBALANCED LOAD MODULE (HEADER LIFT) .....   | 70-34   |      |
| 1D22     | KIT, REEL DRIVE FLOW CONTROL VALVE.....   | 70-10   |      |
| 1F7      | KIT, REEL HYDRAULIC PUMP SEAL .....   | 70-50   |      |
| 1E22     | KIT, RELIEF, SOLENOID CONTROL VALVE BI-<br>DIRECTIONAL MOD. CYLINDER DRIVE .....    | 70-38   |      |
| 1E21     | KIT, SOLENOID CONTROL VALVE,<br>CYLINDER SPEED, POPPET .....                        | 70-37   |      |
| 1C13     | KIT, TERMINAL AND WIRING .....  | 40-50   |      |
| 1F15     | KIT, UNLOADING AUGER SWING HYDRAULIC<br>CYLINDER .....                              | 70-58   |      |
| 2F11     | KNIFEBACK AND HOUSING, STRAW CHOPPER<br>( -640400) .....                            | 120-116 |      |
| 2F13     | KNIFEBACK AND HOUSING, STRAW CHOPPER<br>(640401- ) .....                            | 120-118 |      |
| 2F15     | KNIFEBACK AND HOUSING, STRAW CHOPPER<br>(640401- ) .....                            | 120-120 |      |
| 2F9      | KNIFEBACK AND STRAW CHOPPER HOUSING<br>( -640400) .....                             | 120-114 |      |
| <b>L</b> |   |         |      |
| 1B8      | L.H. AND R.H. MAIN WIRING HARNESS,<br>L.H. AND R.H. REAR .....                      | 40-20   |      |
| 1G16     | L.H. GULL WING DOORS .....  | 80-22   |      |
| 1B6      | L.H. MAIN WIRING HARNESS, L.H. CENTER.....  | 40-18   |      |
| 1B4      | L.H. MAIN WIRING HARNESS, L.H. FRONT.....   | 40-16   |      |
| 1H3      | LADDER, LEFT-HAND LANDING .....   | 80-34   |      |
| 1G3      | LADDER, REAR .....  | 80-8    |      |
| 1G5      | LANDING SUPPORT .....   | 80-10   |      |
| 1H3      | LANDING, LEFT-HAND .....  | 80-34   |      |
| 1G3      | LANDING, REAR LADDER .....  | 80-8    |      |
| 2A18     | LATCHES, HANDLE AND CONVEYOR AUGER<br>CLEANOUT DOOR .....                           | 120-2   |      |
| 2K13     | LEFT-HAND DECALS .....  | 170-8   |      |
| 1H3      | LEFT-HAND LANDING AND LADDER .....  | 80-34   |      |
| 1H3      | LEFT-HAND LANDING LADDER .....  | 80-34   |      |
| 1B20     | LEVEL MONITOR WIRING HARNESS, DUAL .....  | 40-32   |      |
| 1B20     | LEVEL MONITOR, DUAL.....  | 40-32   |      |
| 1B18     | LEVEL MONITOR, GRAIN TANK .....   | 40-30   |      |
| 2K4      | LEVER SELECTOR LOCK.....  | 160-2   |      |
| 1E4      | LIFT CYLINDER, HEADER, HYDRAULIC.....   | 70-18   |      |
| 1E5      | LIFT, HEADER, HYDRAULIC CYLINDER KIT .....  | 70-19   |      |
| 1B18     | LIGHT, GRAIN TANK.....  | 40-30   |      |
| 1B23     | LIGHT, HEADER .....   | 40-36   |      |
| 1B22     | LIGHTS, FRONT AND REAR TAIL.....  | 40-34   |      |
| 1B22     | LIGHTS, FRONT AND REAR TURN.....  | 40-34   |      |
| 1B18     | LIMIT SWITCH, GRAIN TANK UNLOADING AUGER .....                                      | 40-30   |      |
| 2G13     | LINES AND FITTING, CHAFF SPREADER .....   | 120-142 |      |
| 1E2      | LINES AND HOSES, HEADER LIFT.....   | 70-16   |      |
| 1E11     | LINES AND HOSES, HYDRAULIC, CYLINDER<br>SPEED .....                                 | 70-26   |      |
| 1F9      | LINES AND HOSES, UNLOADING AUGER SWING<br>HYDRAULIC CYLINDER .....                  | 70-52   |      |
| 2G17     | LINES, CHAFF SPREADER.....  | 120-146 |      |
| 1D15     | LINES, HITCH BEAM HYDRAULIC.....  | 70-3    |      |
| 1D14     | LINES, HITCH HYDRAULIC.....   | 70-2    |      |
| 1D24     | LINES, HYDRAULIC, REEL PUMP .....   | 70-12   |      |
| 1E8      | LINES, RETURN, HYDRAULIC .....  | 70-22   |      |
| 2E13     | LINKAGE, SHEAVE, FAN DRIVE SPEED CONTROL .....                                      | 120-94  |      |
| 2E9      | LINKAGE, SPEED CONTROL, FAN DRIVE<br>( -640400) .....                               | 120-90  |      |
| 2E11     | LINKAGE, SPEED CONTROL, FAN DRIVE<br>(640401- ) .....                               | 120-92  |      |
| 2I9      | LOADING AUGER, CLEAN GRAIN.....   | 130-14  |      |
| 2K4      | LOCK, LEVER SELECTOR .....  | 160-2   |      |
| 2D11     | LOCKOUT ARM, DUAL-RANGE .....   | 120-68  |      |
| 1B14     | LOW SHAFT SPEED MONITORS AND BRACKETS.....  | 40-26   |      |
| 2H22     | LOWER AUGER, CLEAN GRAIN .....  | 130-2   |      |
| 2H24     | LOWER ELEVATOR, CLEAN GRAIN .....   | 130-4   |      |
| 2I1      | LOWER ELEVATOR, CLEAN GRAIN .....   | 130-6   |      |
| 2G23     | LOWER TAILINGS AUGER .....  | 120-152 |      |
| 2K10     | LOWER TAILINGS AUGER BELT.....  | 170-4   |      |
| 2H7      | LOWER TAILINGS AUGER CHAIN TIGHTENER.....   | 120-160 |      |
| 2H8      | LOWER TAILINGS AUGER DRIVE TIGHTENER.....   | 120-162 |      |
| 2G23     | LOWER TAILINGS AUGER SHAFT .....  | 120-152 |      |
| 2G23     | LOWER TAILINGS AUGER SHAFT TIGHTENER .....  | 120-152 |      |
| 2H1      | LOWER TAILINGS AUGER TROUGH .....   | 120-154 |      |
| 2H6      | LOWER TROUGH SUPPORT .....  | 120-159 |      |
| 2K1      | LUBE BANK, UNLOADING AUGER .....  | 130-58  |      |
| 2H15     | LUBE HOSES R. H.....  | 120-170 |      |
| 2H17     | LUBE HOSES, L.H. ....   | 120-172 |      |
| <b>M</b> |   |         |      |
| 1A20     | MAIN CONTROL BOX, HARVESTRAK.....   | 40-6    |      |
| 1D5      | MAIN DRIVE IDLER .....  | 50-14   |      |
| 1F21     | MAIN FRAME, SEPARATOR.....  | 80-2    |      |
| 1B1      | MAIN HARNESS ASSEMBLY, HITCH .....  | 40-12   |      |
| 1B3      | MAIN HARNESS ASSEMBLY, HITCH .....  | 40-14   |      |
| 1E1      | MAIN HYDRAULIC FILTER .....   | 70-14   |      |
| 1D7      | MAIN POWER SHIELDS .....  | 50-16   |      |
| 1C22     | MAIN POWERSHAFT.....  | 50-6    |      |
| 1C18     | MAINFRAME .....   | 50-2    |      |
| 2H19     | METRIC KEY STOCK KIT .....  | 120-174 |      |
| 1B16     | MONITOR WIRING HARNESS, HARVESTRAK .....  | 40-28   |      |
| 1B18     | MONITOR, LEVEL, GRAIN TANK.....   | 40-30   |      |
| 1B14     | MONITORS AND BRACKETS, LOW SHAFT SPEED .....  | 40-26   |      |
| 1C3      | MOTOR, ADJUSTING, CONCAVE .....   | 40-40   |      |
| 1C1      | MOTOR, ADJUSTING, SEPARATOR FAN DRIVE.....  | 40-38   |      |
| 2G17     | MOTOR, CHAFF SPREADER .....   | 120-146 |      |
| 2G7      | MOUNTING SUPPORT, CHAFF SPREADER.....   | 120-136 |      |
| 1E10     | MOUNTING, HYDRAULIC/HYDRO OIL RESERVOIR .....                                       | 70-24   |      |
| 2F21     | MOUNTING, STRAW SPREADER AND GUARD .....  | 120-126 |      |
| 1F13     | MOUNTING, UNLOADING AUGER SWING<br>HYDRAULIC .....                                  | 70-56   |      |
| 1F4      | MOUNTINGS, SOLENOID CONTROL VALVE<br>MODULE ASSEMBLY .....                          | 70-46   |      |
| 1F5      | MOUNTINGS, SOLENOID CONTROL VALVE<br>MODULE ASSEMBLY .....                          | 70-47   |      |
| 1A16     | MTG. BRKT., CONTROL BOX, DIAL-A-MATIC .....   | 40-2    |      |
| 1H1      | MUD SHIELDS (R.H. SIDE).....  | 80-32   |      |
| 1G9      | MUD SHIELDS, AUGER DRIVE (R-H SIDE) .....   | 80-14   |      |

# 1A11

9501 PULL-TYPE COMBINE

## ALPHABETICAL INDEX - CONTINUED

| GRID     |   | PAGE    | GRID     |  | PAGE    |
|----------|---|---------|----------|--|---------|
| <b>P</b> |   |         |          |  |         |
| 2H10     | PADDLES, UPPER TAILINGS AUGER .....   | 120-164 | 2G11     | ROD AND KNOB, CHAFF SPREADER CONTROL .....                                     | 120-140 |
| 2C13     | PAN, SHAKER .....   | 120-46  | 2F5      | ROTOR AND SHEAVE, STRAW CHOPPER .....  | 120-110 |
| 2J16     | PLATE, CROSS AUGER BEARING, L.H. ....   | 130-46  | <b>S</b> |  |         |
| 1G1      | PLATFORM, REAR .....  | 80-6    | 1H11     | SAFETY STOP, DRIVE SHIELDS, FEEDER HOUSE .....                                 | 110-6   |
| 1B12     | PLUGGING SENSING SWITCH, STRAW WALKER .....                                       | 40-24   | 2J24     | SAMPLING TROUGH, GRAIN TANK .....  | 130-56  |
| 1E25     | POPPET KIT, SOLENOID CONTROL VALVE<br>DOUBLE PILOTED MODULE, AUGER SWING.....     | 70-41   | 1H23     | SEAL, FEEDER HOUSE .....   | 110-18  |
| 1F3      | POPPET KIT, SOLENOID CONTROL VALVE<br>DOUBLE PILOTED MODULE, REEL FORE/AFT.....   | 70-44   | 2G5      | SEALS AND PAN, CHAFF SPREADER .....  | 120-134 |
| 1E21     | POPPET KIT, SOLENOID CONTROL VALVE, BI-<br>DIRECTIONAL MOD. CYLINDER DRIVE .....  | 70-37   | 2D21     | SECONDARY COUNTERSHAFT DRIVE .....   | 120-78  |
| 1E18     | POPPET KIT, SOLENOID CONTROL VALVES,<br>HEADER LIFT MODULE .....                  | 70-34   | 1B12     | SENSING SWITCH, STRAW WALKER PLUGGING .....                                    | 40-24   |
| 1D7      | POWER SHIELDS, MAIN.....  | 50-16   | 1A24     | SENSOR, HITCH TUBE.....  | 40-10   |
| 1C21     | POWERSHAFT AND SHIELD, TELESCOPING .....  | 50-5    | 1A24     | SENSOR, SHORT TURN.....  | 40-10   |
| 1C22     | POWERSHAFT, MAIN .....  | 50-6    | 1F21     | SEPARATOR CROSS BRACES .....   | 80-2    |
| 2C1      | PRE-CLEANER CHAFFER FRAME .....   | 120-34  | 2C23     | SEPARATOR CURTAIN.....   | 120-56  |
| 2B23     | PRE-CLEANING CHAFFER .....  | 120-32  | 2D1      | SEPARATOR CURTAIN.....   | 120-58  |
| 2D5      | PRIMARY COUNTERSHAFT, SUPPORTS AND VARI-<br>ABLE SHEAVE.....                      | 120-62  | 2E7      | SEPARATOR FAN DRIVE .....  | 120-88  |
| 2E17     | PUMP MOUNTING SHEAVE, REEL / BELT PICKUP<br>DRIVE .....                           | 120-98  | 1C1      | SEPARATOR FAN DRIVE ADJUSTING MOTOR.....                                       | 40-38   |
| 2G21     | PUMP SEAL KIT, CHAFF SPREADER.....  | 120-150 | 1F21     | SEPARATOR FRAME .....  | 80-2    |
| 2G15     | PUMP, CHAFF SPREADER.....   | 120-144 | 2A22     | SEPARATOR/FEEDER HOUSE SEAL, STONE<br>TRAP AND DOOR .....                      | 120-6   |
| 2G19     | PUMP, CHAFF SPREADER.....   | 120-148 | 1C9      | SERVICE KIT, ELECTRICAL CONNECTORS .....                                       | 40-46   |
| 1F7      | PUMP, REEL HYDRAULIC, SEAL KIT .....  | 70-50   | 1C11     | SERVICE KIT, ELECTRICAL CONNECTORS .....                                       | 40-48   |
| 1D24     | PUMP, REEL, HYDRAULIC HOSES .....   | 70-12   | 1C25     | SHAFT (GEAR CASE) .....  | 50-9    |
| <b>R</b> |   |         |          |  |         |
| 1G18     | R.H. GULL WING DOORS.....   | 80-24   | 2B11     | SHAFT, BEATER AND DRIVE BELT .....   | 120-20  |
| 1B10     | R.H. MAIN WIRING HARNESS .....  | 40-22   | 1H21     | SHAFT, DRIVE, FRONT, SHEAVE AND<br>MOUNTINGS (FIXED SPEED WITH REVERSER) ..... | 110-16  |
| 2B5      | RASP BAR CONCAVE AND GRATE .....  | 120-14  | 1H17     | SHAFT, DRIVE, UPPER, SHEAVE AND MOUNTING<br>(FIXED SPEED WITH REVERSER) .....  | 110-12  |
| 2B7      | RASP BAR CONCAVE AND GRATE .....  | 120-16  | 2G23     | SHAFT, LOWER TAILINGS AUGER .....  | 120-152 |
| 2B3      | RASP BAR THRESHING CYLINDER .....   | 120-12  | 2I5      | SHAFT, UPPER CLEAN GRAIN ELEVATOR .....  | 130-10  |
| 1G22     | REAR CORNER SHEET, L H .....  | 80-28   | 1H15     | SHAFT, UPPER, FEEDER HOUSE.....  | 110-10  |
| 1G7      | REAR HOOD .....   | 80-12   | 2C13     | SHAKER PAN.....  | 120-46  |
| 1F20     | REAR JACKSTAND .....  | 80-1    | 2B1      | SHEAR BAR, CYLINDER.....   | 120-10  |
| 1G3      | REAR LADDER.....  | 80-8    | 2F5      | SHEAVE AND ROTOR, STRAW CHOPPER .....  | 120-110 |
| 1G3      | REAR LADDER AND LANDING .....   | 80-8    | 2E13     | SHEAVE LINKAGE, FAN DRIVE SPEED CONTROL .....                                  | 120-94  |
| 1G3      | REAR LADDER LANDING .....   | 80-8    | 2I11     | SHEAVE, CLEAN GRAIN ELEVATOR GEARCASE.....                                     | 130-16  |
| 1F23     | REAR LADDER LANDING HANDRAILS .....   | 80-4    | 2E17     | SHEAVE, MOUNTING, PUMP, REEL / BELT<br>PICKUP DRIVE .....                      | 120-98  |
| 1B8      | REAR LIGHT HARNESS AND SHIELDS .....  | 40-20   | 2I5      | SHEAVE, UPPER CLEAN GRAIN ELEVATOR .....                                       | 130-10  |
| 1G1      | REAR PLATFORM .....   | 80-6    | 2E5      | SHEAVES, BEATER DRIVE AND TIGHTENER .....                                      | 120-86  |
| 2K9      | REEL BELTS .....  | 170-3   | 2F1      | SHIELDS, STRAW CHOPPER DRIVE<br>(640401- ) .....                               | 120-106 |
| 1D20     | REEL DRIVE FLOW CONTROL VALVE.....  | 70-8    | 1C21     | SHIELD AND TELESCOPING POWERSHAFT.....   | 50-5    |
| 1D22     | REEL DRIVE FLOW CONTROL VALVE .....   | 70-10   | 1G12     | SHIELD, DRIVE, R.H. REAR .....   | 80-18   |
| 1D23     | REEL DRIVE FLOW CONTROL VALVE, ADJUSTING<br>SCREW KIT .....                       | 70-11   | 1G11     | SHIELD, FAN DRIVE (L-H SIDE) .....   | 80-16   |
| 1D18     | REEL DRIVE HYDRAULIC SYSTEM<br>FRONT AND L.H. SIDE.....                           | 70-6    | 1G14     | SHIELD, R.H. SIDE .....  | 80-20   |
| 1F3      | REEL FORE/AFT, KIT, POPPET, SOLENOID<br>CONTROL VALVE DOUBLE PILOTED MODULE ..... | 70-44   | 1D9      | SHIELD, REAR UNIVERSAL JOINT .....   | 50-18   |
| 1F7      | REEL HYDRAULIC PUMP SEAL KIT .....  | 70-50   | 2H13     | SHIELD, UPPER TAILINGS AUGER DRIVE .....                                       | 120-168 |
| 1D24     | REEL PUMP HOSES, HYDRAULIC .....  | 70-12   | 1B8      | SHIELDS FOR REAR LIGHT HARNESS .....   | 40-20   |
| 1E22     | RELIEF KIT, SOLENOID CONTROL VALVE BI-<br>DIRECTIONAL MOD. CYLINDER DRIVE .....   | 70-38   | 1D7      | SHIELDS, MAIN POWER.....   | 50-16   |
| 1E10     | RESERVOIR, HYDRAULIC/HYDROSTATIC .....  | 70-24   | 1H1      | SHIELDS, MUD (R.H. SIDE) .....   | 80-32   |
| 1H19     | RETURN FLOOR, FEEDER HOUSE.....   | 110-14  | 1G9      | SHIELDS, MUD, AUGER DRIVE (R-H SIDE).....                                      | 80-14   |
| 1E8      | RETURN LINES, HYDRAULIC .....   | 70-22   | 2E23     | SHIELDS, STRAW CHOPPER DRIVE<br>( -640400) .....                               | 120-104 |
| 1I9      | REVERSER ACTUATOR .....   | 110-28  | 2I15     | SHIELDS, UPPER CLEAN GRAIN ELEVATOR<br>( -640400) .....                        | 130-20  |
| 1H7      | REVERSER GEAR BOX .....   | 110-2   | 2I17     | SHIELDS, UPPER CLEAN GRAIN ELEVATOR<br>(640401- ) .....                        | 130-22  |
| 1H17     | REVERSER) .....   | 110-12  | 2B15     | SHOE GRAIN SUPPLY AUGERS AND HOUSING .....                                     | 120-24  |
| 1H21     | REVERSER) .....   | 110-16  | 2B17     | SHOE GRAIN SUPPLY AUGERS AND HOUSING .....                                     | 120-26  |
|          |   |         | 1G16     | SIDE SHEET DOORS .....   | 80-22   |
|          |   |         | 1G18     | SIDE SHEET DOORS .....   | 80-24   |
|          |   |         | 1G14     | SIDE SHIELD, R.H. SIDE .....   | 80-20   |
|          |   |         | 2E3      | SIEVE AND CHAFFER DRIVE, CONVEYOR AUGERS<br>AND STRAW WALKER .....             | 120-84  |

# 1A12

9501 PULL-TYPE COMBINE

## ALPHABETICAL INDEX - CONTINUED

| GRID | PAGE  | GRID    | PAGE |
|------|---|---------|------|
| 2C9  | SIEVE ELEMENT .....   | 120-42  |      |
| 2C11 | SIEVE FRAME .....   | 120-44  |      |
| 1E6  | SINGLE ACCUMULATOR .....  | 70-20   |      |
| 1I7  | SLIP CLUTCH, FEEDER HOUSE .....   | 110-26  |      |
| 1E21 | SOLENOID CONTROL VALVE BI-DIRECTIONAL<br>MODULE POPPET KIT .....            | 70-37   |      |
| 1E22 | SOLENOID CONTROL VALVE BI-DIRECTIONAL<br>MODULE RELIEF KIT .....            | 70-38   |      |
| 1E19 | SOLENOID CONTROL VALVE BI-DIRECTIONAL<br>MODULE, CYLINDER SPEED .....       | 70-35   |      |
| 1F6  | SOLENOID CONTROL VALVE BRACKETS .....                                       | 70-48   |      |
| 1E23 | SOLENOID CONTROL VALVE DOUBLE PILOTED<br>MODULE, AUGER SWING .....          | 70-39   |      |
| 1F1  | SOLENOID CONTROL VALVE DOUBLE PILOTED<br>MODULE, GRAIN TANK UNLOADING ..... | 70-42   |      |
| 1F4  | SOLENOID CONTROL VALVE MODULE ASSEMBLY<br>AND MOUNTINGS .....               | 70-46   |      |
| 1F5  | SOLENOID CONTROL VALVE MODULE ASSEMBLY<br>AND MOUNTINGS .....               | 70-47   |      |
| 1E14 | SOLENOID CONTROL VALVE UNBALANCED LOAD<br>MODULE (HEADER LIFT MODULE) ..... | 70-30   |      |
| 1E13 | SOLENOID CONTROL VALVE UNLOAD MODULE .....                                  | 70-28   |      |
| 1E16 | SOLENOID CONTROL VALVES, ADJUSTABLE STOP<br>KIT .....                       | 70-32   |      |
| 1E17 | SOLENOID CONTROL VALVES, ARMATURE KIT,<br>HEADER LIFT MODULE .....          | 70-33   |      |
| 2E9  | SPEED CONTROL LINKAGE, FAN DRIVE<br>( -640400) .....                        | 120-90  |      |
| 2E11 | SPEED CONTROL LINKAGE, FAN DRIVE<br>(640401- ) .....                        | 120-92  |      |
| 2E13 | SPEED CONTROL, FAN DRIVE SHEAVE LINKAGE .....                               | 120-94  |      |
| 1D10 | SPINDLE, HOUSING, AND WHEEL .....   | 50-19   |      |
| 2D1  | SPREADER CURTAIN .....  | 120-58  |      |
| 2G15 | SPREADER, CHAFF, MOTOR, LINES AND HOSES .....                               | 120-144 |      |
| 2F23 | SPREADER, STRAW .....   | 120-128 |      |
| 2K9  | SPREADER, STRAW, BELTS .....  | 170-3   |      |
| 2I5  | SPROCKET, UPPER CLEAN GRAIN ELEVATOR .....                                  | 130-10  |      |
| 2H5  | SPROCKETS, TAILINGS ELEVATOR CONVEYOR .....                                 | 120-158 |      |
| 1C20 | STAND, JACK, HITCH BEAM .....   | 50-4    |      |
| 2A22 | STONE TRAP, DOOR AND FEEDER HOUSE/<br>SEPARATOR SEAL .....                  | 120-6   |      |
| 2K9  | STRAW CHOPPER BELTS .....   | 170-3   |      |
| 2F3  | STRAW CHOPPER DECK, SUPPORTS AND FINS .....                                 | 120-108 |      |
| 2F19 | STRAW CHOPPER DOOR .....  | 120-124 |      |
| 2E23 | STRAW CHOPPER DRIVE SHIELDS<br>( -640400) .....                             | 120-104 |      |
| 2F1  | STRAW CHOPPER DRIVE SHIELDS<br>(640401- ) .....                             | 120-106 |      |
| 2E19 | STRAW CHOPPER DRIVES (FRONT) .....  | 120-100 |      |
| 2E21 | STRAW CHOPPER DRIVES (REAR) .....   | 120-102 |      |
| 2F11 | STRAW CHOPPER HOUSING AND KNIFEBACK<br>( -640400) .....                     | 120-116 |      |
| 2F9  | STRAW CHOPPER HOUSING AND KNIFEBANK<br>( -640400) .....                     | 120-114 |      |
| 2F13 | STRAW CHOPPER HOUSING AND KNIFEBANK<br>(640401- ) .....                     | 120-118 |      |
| 2F15 | STRAW CHOPPER HOUSING AND KNIFEBANK<br>(640401- ) .....                     | 120-120 |      |
| 2F5  | STRAW CHOPPER ROTOR AND SHEAVE .....  | 120-110 |      |
| 1B8  | STRAW CHOPPER SENSOR BRACKET .....  | 40-20   |      |
| 2F23 | STRAW SPREADER .....  | 120-128 |      |
| 2C21 | STRAW SPREADER DRIVE, SHIELD AND STRAW<br>WALKER CRANKS .....               | 120-54  |      |
| 2F21 | STRAW SPREADER MOUNTING AND GUARD .....                                     | 120-126 |      |
| 1B12 | STRAW WALKER (PLUGGING) SENSING SWITCH .....                                | 40-24   |      |
| 2C17 | STRAW WALKER BEARING CONVERSION<br>( -1990) .....                           | 120-50  |      |
| 2C21 | STRAW WALKER CRANKS, STRAW SPREADER DRIVE<br>AND SHIELD .....               | 120-54  |      |
| 2D23 | STRAW WALKER DRIVE GEARCASE .....   | 120-80  |      |
| 2E1  | STRAW WALKER DRIVE GEARCASE .....   | 120-82  |      |
| 2E3  | STRAW WALKER, CONVEYOR AUGERS, SIEVE AND<br>CHAFFER DRIVE .....             | 120-84  |      |
| 2C19 | STRAW WALKERS .....   | 120-52  |      |
| 2C15 | STRAW WALKERS<br>( -1990) .....   | 120-48  |      |
| 2J23 | STRAWCHOPPER TOP BELT GUIDE (TRAP) .....                                    | 130-54  |      |
| 1C15 | SUPPLEMENTARY TERMINALS AND CONNECTORS .....                                | 40-52   |      |
| 2J7  | SUPPORT AND BRACES, AUGER .....   | 130-36  |      |
| 1I5  | SUPPORT, FEED PLATE .....   | 110-24  |      |
| 1G5  | SUPPORT, LANDING .....  | 80-10   |      |
| 2H6  | SUPPORT, LOWER TROUGH .....   | 120-159 |      |
| 2D5  | SUPPORTS AND VARIABLE SHEAVE, PRIMARY<br>COUNTERSHAFT .....                 | 120-62  |      |
| 1F15 | SWING, UNLOADING AUGER, HYDRAULIC<br>CYLINDER KIT .....                     | 70-58   |      |
| 1B12 | SWITCH, SENSING, STRAW WALKER PLUGGING .....                                | 40-24   |      |
| 2J7  | SWIVEL SUPPORT AND BRACES, AUGER .....                                      | 130-36  |      |
| 2J7  | SWIVEL, AUGER SUPPORT .....   | 130-36  |      |
| 2J5  | SWIVEL, HORIZONTAL UNLOADING AUGER .....                                    | 130-34  |      |
| 1D18 | SYSTEM, HYDRAULIC, REEL DRIVE<br>FRONT AND L.H. SIDE .....                  | 70-6    |      |
| 1D16 | SYSTEM, TRACTOR RETURN .....  | 70-4    |      |
| 1D16 | SYSTEM, TRACTOR SUPPLY .....  | 70-4    |      |
| 1F11 | SYSTEM, UNLOADING AUGER ENGAGE .....  | 70-54   |      |
| T    |   |         |      |
| 1B22 | TAIL LIGHTS .....   | 40-34   |      |
| 2H6  | TAILINGS DRIVE BRACKET .....  | 120-159 |      |
| 2H5  | TAILINGS ELEVATOR CONVEYOR BEARINGS .....                                   | 120-158 |      |
| 2H5  | TAILINGS ELEVATOR CONVEYOR CHAIN .....                                      | 120-158 |      |
| 2H5  | TAILINGS ELEVATOR CONVEYOR SPROCKETS .....                                  | 120-158 |      |
| 2H3  | TAILINGS ELEVATOR HOUSING .....   | 120-156 |      |
| 2J24 | TANK, GRAIN, SAMPLING TROUGH .....  | 130-56  |      |
| 1C21 | TELESCOPING POWERSHAFT AND SHIELD .....                                     | 50-5    |      |
| 1C13 | TERMINAL AND WIRING KIT .....   | 40-50   |      |
| 1C7  | TERMINALS, ELECTRICAL, WEATHERPACK .....                                    | 40-44   |      |
| 1C15 | TERMINALS, SUPPLEMENTARY, AND CONNECTORS .....                              | 40-52   |      |
| 2A20 | THRESHING CYLINDER COVER .....  | 120-4   |      |
| 2B3  | THRESHING CYLINDER, RASP BAR .....  | 120-12  |      |
| 2E5  | TIGHTENER AND BEATER DRIVE SHEAVES .....                                    | 120-86  |      |
| 2D13 | TIGHTENER, CYLINDER DRIVE, DUAL-RANGE .....                                 | 120-70  |      |
| 2E15 | TIGHTENER, FEEDER HOUSE DRIVE .....   | 120-96  |      |
| 1I3  | TIGHTENER, GUIDES AND FEEDER CONVEYOR<br>DRIVE CHAIN .....                  | 110-22  |      |
| 2G23 | TIGHTENER, LOWER TAILINGS AUGER .....                                       | 120-152 |      |
| 2H7  | TIGHTENER, LOWER TAILINGS AUGER CHAIN .....                                 | 120-160 |      |
| 2H8  | TIGHTENER, LOWER TAILINGS AUGER DRIVE .....                                 | 120-162 |      |
| 1H5  | TOOL BOX .....  | 80-36   |      |
| 2I19 | TOP, TANK, GRAIN .....  | 130-24  |      |
| 1D16 | TRACTOR RETURN SYSTEM .....   | 70-4    |      |
| 1D16 | TRACTOR SUPPLY SYSTEM .....   | 70-4    |      |
| 2A22 | TRAP, STONE .....   | 120-6   |      |
| 1B22 | TURN LIGHTS .....   | 40-34   |      |
| U    |   |         |      |
| 1D9  | UNIVERSAL JOINT SHIELD (REAR) .....   | 50-18   |      |
| 1C22 | UNIVERSAL JOINT, REAR .....   | 50-6    |      |
| 1D9  | UNIVERSAL SHIELD, GEAR CASE .....   | 50-18   |      |
| 2K9  | UNLOADING AUGER BELTS .....   | 170-3   |      |

# 1A13

9501 PULL-TYPE COMBINE

## ALPHABETICAL INDEX - CONTINUED

| <i>GRID</i> |  | <i>PAGE</i> | <i>GRID</i> |   | <i>PAGE</i> |
|-------------|--|-------------|-------------|---|-------------|
| 2J21        | UNLOADING AUGER COUNTERSHAFT DRIVE .....                                   | 130-52      | 1C13        | WIRING AND TERMINAL KIT .....                           | 40-50       |
| 2J23        | UNLOADING AUGER DRIVE BELT GUIDE .....                                     | 130-54      | 1C13        | WIRING CRIMPING TOOL .....                              | 40-50       |
| 1F11        | UNLOADING AUGER ENGAGE SYSTEM .....  | 70-54       | 1B20        | WIRING HARNESS, DUAL LEVEL MONITOR .....                | 40-32       |
| 2J12        | UNLOADING AUGER HOUSING, HORIZONTAL<br>(14- AND 17-FT.) .....              | 130-42      | 1B18        | WIRING HARNESS, GRAIN TANK .....                        | 40-30       |
| 1B18        | UNLOADING AUGER LIMIT SWITCH.....  | 40-30       | 1B16        | WIRING HARNESS, HARVESTRAK MONITOR .....                | 40-28       |
| 2K1         | UNLOADING AUGER LUBE BANK.....   | 130-58      | 1B6         | WIRING HARNESS, MAIN, L.H. CENTER .....                 | 40-18       |
| 1F15        | UNLOADING AUGER SWING HYDRAULIC<br>CYLINDER KIT .....                      | 70-58       | 1B4         | WIRING HARNESS, MAIN, L.H. FRONT .....                  | 40-16       |
| 1F13        | UNLOADING AUGER SWING HYDRAULIC CYLINDER ....                              | 70-56       | 1B10        | WIRING HARNESS, R.H. MAIN .....                         | 40-22       |
| 1F9         | UNLOADING AUGER SWING HYDRAULIC CYLINDER<br>LINES AND HOSES.....           | 70-52       | 1A16        | WIRING HARNESS, CONTROL BOX, DIAL-A-MATIC .....         | 40-2        |
| 1F13        | UNLOADING AUGER SWING HYDRAULIC MOUNTING ..                                | 70-56       | 1C13        | WIRING STRIPPING TOOL .....                             | 40-50       |
| 2J5         | UNLOADING AUGER SWIVEL, HORIZONTAL .....                                   | 130-34      | 1C15        | WIRING, SUPPLEMENTARY TERMINALS AND<br>CONNECTORS ..... | 40-52       |
| 2J9         | UNLOADING AUGER, HORIZONTAL,<br>HUB SUPPORT .....                          | 130-38      |             |   |             |
| 2K10        | UNLOADING SYSTEM BELTS .....   | 170-4       |             |   |             |
| 2I3         | UPPER CLEAN GRAIN ELEVATOR .....   | 130-8       |             |   |             |
| 2I5         | UPPER CLEAN GRAIN ELEVATOR SHAFT,<br>SPROCKET AND SHEAVE .....             | 130-10      |             |   |             |
| 2I15        | UPPER CLEAN GRAIN ELEVATOR SHIELDS<br>( -640400) .....                     | 130-20      |             |   |             |
| 2I17        | UPPER CLEAN GRAIN ELEVATOR SHIELDS<br>(640401- ) .....                     | 130-22      |             |   |             |
| 2I7         | UPPER CLEAN GRAIN LOADING AUGER HOUSING .....                              | 130-12      |             |   |             |
| 1H15        | UPPER SHAFT, FEEDER HOUSE .....  | 110-10      |             |   |             |
| 2K10        | UPPER TAILINGS AUGER BELT .....  | 170-4       |             |   |             |
| 2H13        | UPPER TAILINGS AUGER DRIVE .....   | 120-168     |             |   |             |
| 2H10        | UPPER TAILINGS AUGER HOUSING AND PADDLE<br>ASSEMBLY.....                   | 120-164     |             |   |             |
| 2H10        | UPPER TAILINGS AUGER PADDLE ASSEMBLY .....                                 | 120-164     |             |   |             |
| 2H13        | UPPER TAILINGS AUGER, DRIVE AND SHIELD .....                               | 120-168     |             |   |             |
| 2H12        | UPPER TAILINGS DRIVE CHAIN TIGHTENER .....                                 | 120-166     |             |   |             |
| V           |  |             |             |   |             |
| 1E13        | VALVE SOLENOID CONTROL UNLOAD MODULE.....                                  | 70-28       |             |   |             |
| 1E23        | VALVE, AUGER SWING, DOUBLE PILOTED,<br>SOLENOID CONTROL VALVE .....        | 70-39       |             |   |             |
| 1F1         | VALVE, GRAIN TANK UNLOADING, DOUBLE<br>PILOTED SOLENOID CONTROL VALVE..... | 70-42       |             |   |             |
| 1D20        | VALVE, REEL DRIVE FLOW CONTROL .....                                       | 70-8        |             |   |             |
| 1F4         | VALVE, SOLENOID CONTROL MODULE ASSEMBLY<br>AND MOUNTINGS.....              | 70-46       |             |   |             |
| 1F5         | VALVE, SOLENOID CONTROL MODULE ASSEMBLY<br>AND MOUNTINGS.....              | 70-47       |             |   |             |
| 1E19        | VALVE, SOLENOID CONTROL, CYLINDER SPEED<br>BI-DIRECTIONAL MODULE .....     | 70-35       |             |   |             |
| 1E14        | VALVE, SOLENOID CONTROL, HEADER LIFT<br>MODULE.....                        | 70-30       |             |   |             |
| 1E13        | VALVE, UNLOAD MODULE.....  | 70-28       |             |   |             |
| 2D5         | VARIABLE SHEAVE AND SUPPORTS, PRIMARY<br>COUNTERSHAFT .....                | 120-62      |             |   |             |
| 2J1         | VERTICAL AUGER LOWER GEAR CASE .....                                       | 130-30      |             |   |             |
| W           |  |             |             |   |             |
| 2C19        | WALKERS, STRAW .....   | 120-52      |             |   |             |
| 2C15        | WALKERS, STRAW<br>( -1990).....  | 120-48      |             |   |             |
| 2C17        | WALKERS, STRAW, BEARING CONVERSION<br>( -1990).....                        | 120-50      |             |   |             |
| 1C7         | WEATHERPACK CONNECTORS .....   | 40-44       |             |   |             |
| 1C7         | WEATHERPACK TERMINALS.....   | 40-44       |             |   |             |
| 1D10        | WHEEL, SPINDLE, AND HOUSING .....  | 50-19       |             |   |             |

FC: 0000

ELECTRICAL

---

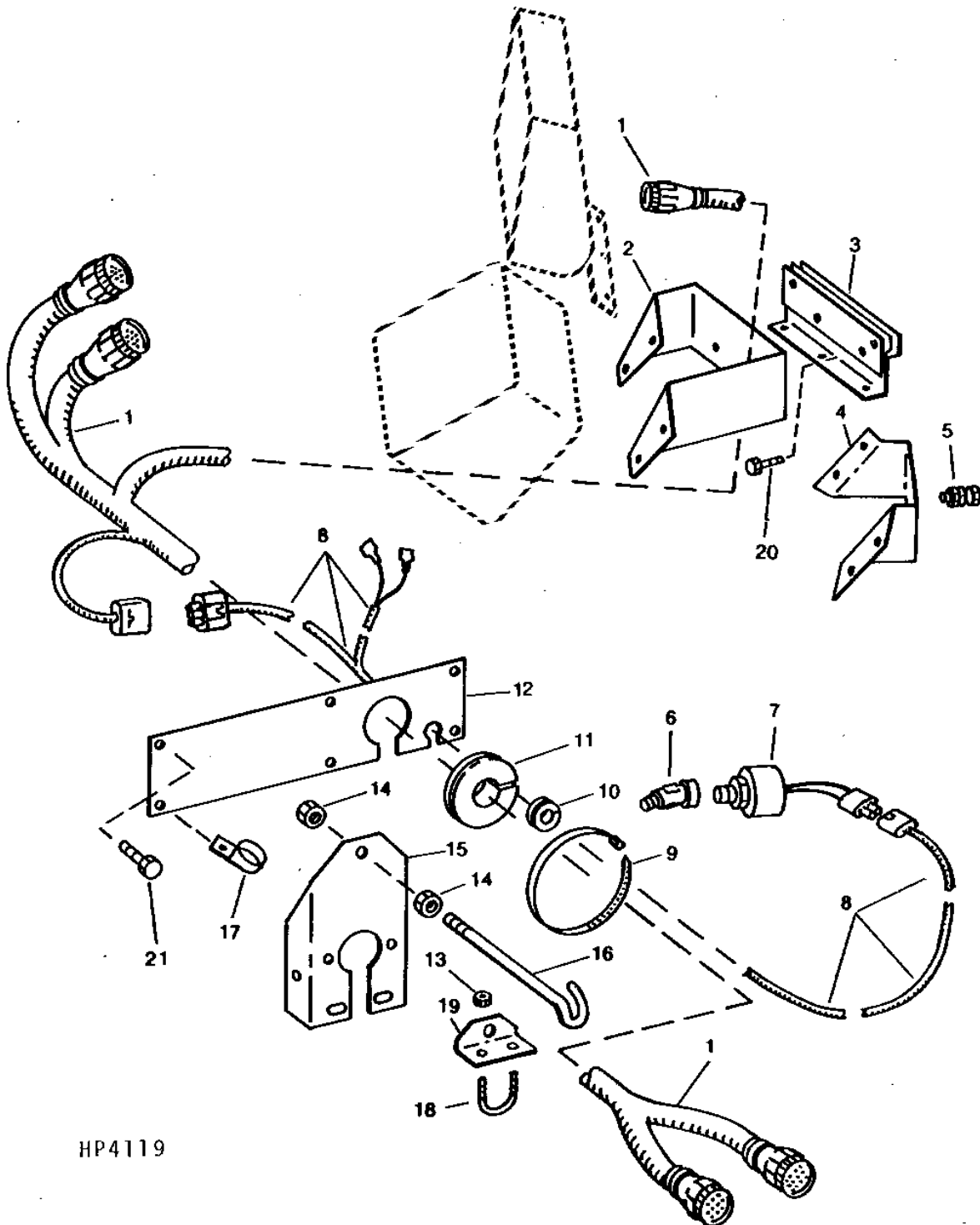
MEMORANDA

# 1A16

FC: 5285

ELECTRICAL

CONTROL BOX HOUSING, MOUNTING BRACKETS AND HARNESS  
(DIAL-A-MATIC)  
HP4119 -UN-01JAN94



HP4119

# 1A17

FC: 5285

ELECTRICAL

**CONTROL BOX HOUSING, MOUNTING BRACKETS AND HARNESS - CONTINUED  
(DIAL-A-MATIC)**

| KEY | PART NO. | PART NAME      | QTY | SERIAL NO. | REMARKS                            |
|-----|----------|----------------|-----|------------|------------------------------------|
| 1   | AH200282 | WIRING HARNESS | 1   |            | 2860 MM FOR ROW-CROP TRACTORS      |
|     | AH200470 | WIRING HARNESS | 1   |            | 7400 MM FOR 4-WHEEL DRIVE TRACTORS |
| 2   | AH200649 | BRACKET        | 1   |            |                                    |
| 3   | RE39122  | ADAPTER        | 1   |            |                                    |
| 4   | R100373  | PLATE          | 1   |            |                                    |
| 5   | 19H1948  | CAP SCREW      | 6   |            | 1/4" X 3/4"                        |
|     | 12H302   | LOCK WASHER    | 6   |            | 1/4"                               |
|     | 14H786   | NUT            | 6   |            | 1/4"                               |
| 6   | M45937   | ELBOW FITTING  | 1   |            |                                    |
| 7   | AH133896 | SWITCH         | 1   |            |                                    |
| 8   | AH200468 | WIRING HARNESS | 1   |            |                                    |
| 9   | H113196  | TIE BAND       | 6   |            |                                    |
|     | R44302   | TIE BAND       | 6   |            |                                    |
| 10  | AH200818 | GROMMET        | 1   |            |                                    |
| 11  | AH200651 | GROMMET        | 1   |            |                                    |
| 12  | AH200471 | COVER          | 1   |            |                                    |
| 13  | T16464   | LOCK NUT       | 2   |            | 7.925 MM (5/16")                   |
| 14  | 14H812   | NUT            | 2   |            | 3/8"                               |
| 15  | H101161  | BRACKET        | 1   |            |                                    |
| 16  | H101317  | EYEBOLT        | 1   |            |                                    |
| 17  | T26955   | CLAMP          | 1   |            |                                    |
| 18  | C12152   | U-BOLT         | 1   |            | (SUB N33920)                       |
| 19  | H115318  | HANGER         | 1   |            |                                    |
| 20  | 19H1948  | CAP SCREW      | 2   |            | 1/4" X 3/4"                        |
| 21  | 37H27    | SCREW          | 6   |            | 5/16" X 7/8"                       |

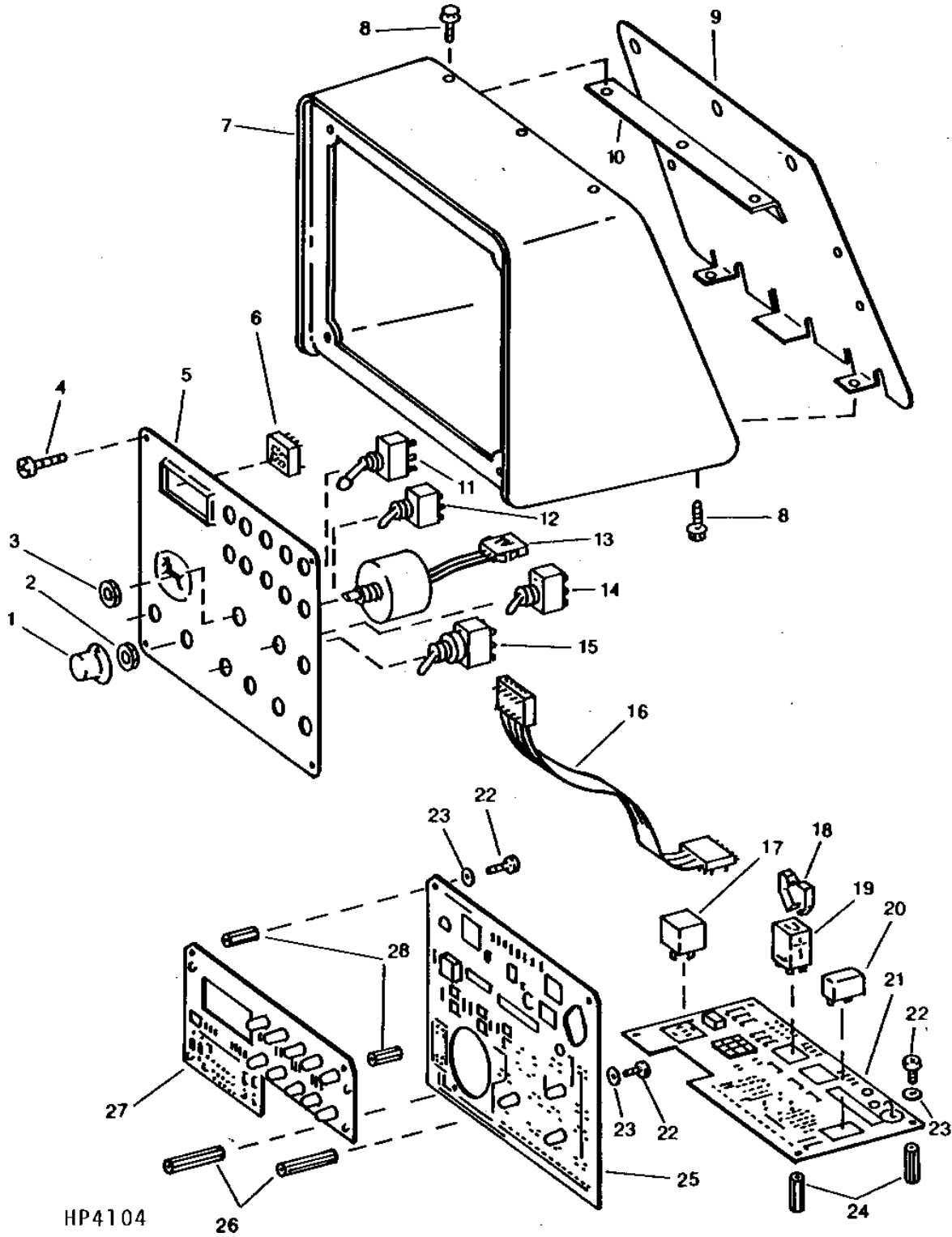


# 1A18

FC: 5285

ELECTRICAL

MAIN CONTROL BOX  
HP4104 -UN-01JAN94



# 1A19

FC: 5285

ELECTRICAL

MAIN CONTROL BOX - CONTINUED

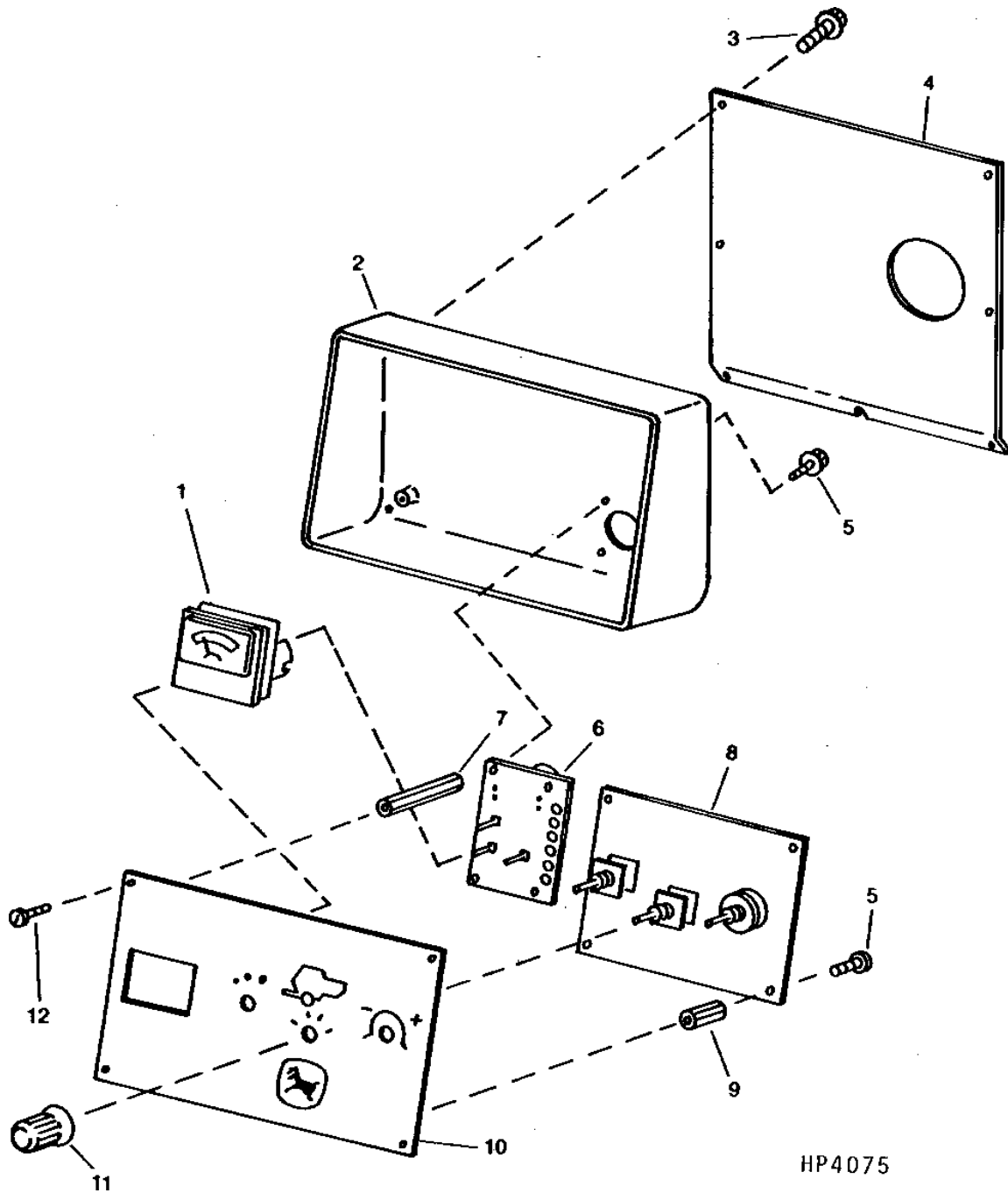
| KEY | PART NO. | PART NAME          | QTY | SERIAL NO.      | REMARKS   |
|-----|----------|--------------------|-----|-----------------|---|
| 1   | AH126811 | KNOB               | 1   |                 |   |
| 2   | H106246  | LOCK NUT           | 1   | 9.525 MM (3/8") |   |
| 3   | R65044   | NUT                | 1   | M12             |   |
| 4   | 37H153   | SCREW              | 4   | 0.190" X 3/8"   |   |
| 5   | AH200746 | PLATE              | 1   |                 |   |
| 6   | AH200753 | DIGITAL DISPLAY    | 1   |                 |   |
| 7   | AH200743 | HOUSING            | 2   |                 |   |
| 8   | 37H148   | SCREW              | 9   | 1/4" X 5/8"     |   |
| 9   | AH200744 | BASE               | 1   |                 |   |
| 10  | R67211   | BRACKET            | 1   |                 |   |
| 11  | AH200646 | TOGGLE SWITCH      | 2   |                 | SWITCH LOCKING; HEADER ENGAGE/UNLOADING AUGER<br>ANGAGE |
| 12  | AH200654 | TOGGLE SWITCH      | 3   |                 | SWITCH MOMENTARY; HEADER LIFT/CYLINDER SPEED            |
| 13  | AH135951 | SWITCH             | 1   |                 | DIAL-A-MATIC  |
| 14  | AH200653 | TOGGLE SWITCH      | 1   |                 | 3 POSITION SWITCH; UNLOADING AUGER SWING                |
| 15  | AH200652 | TOGGLE SWITCH      | 2   |                 | 2 POSITION SWITCH; TACH. SELECT/HEADER<br>REVERSER      |
| 16  | AH200748 | CABLE              | 1   |                 |   |
| 17  | AH106612 | RELAY              | 1   |                 |   |
| 18  | .....    | CLIP               | 2   |                 | (SUB AH200816)  |
| 19  | AH200749 | RELAY              | 2   |                 |   |
| 20  | AH127677 | CIRCUIT BREAKER    | 5   |                 |   |
| 21  | AH200461 | CIRCUIT BOARD      | 1   |                 | POWER   |
| 22  | .....    | CAP SCREW, AND NUT | 1   |                 | (SUB AH200816) NO. 4-40NC X 3/8                         |
| 23  | 12H354   | LOCK WASHER        | 14  |                 | 0.112"  |
| 24  | .....    | SPACER             | 1   |                 | (SUB AH200816) 1/4 X 7/8                                |
| 25  | AH200462 | CIRCUIT BOARD      | 1   |                 | SWITCH  |
| 26  | .....    | SPACER             | 1   |                 | (SUB AH200816) 1/4 X 1-1/4                              |
| 27  | AH200463 | CIRCUIT BOARD      | 1   |                 | DISPLAY   |
| 28  | .....    | SPACER             | 1   |                 | (SUB AH200816) 1/4 X 3/4                                |

# 1A20

FC: 5234

ELECTRICAL

HARVESTRAK MAIN CONTROL BOX  
HP4075 -UN-01JAN94



HP4075

# 1A21

FC: 5234

ELECTRICAL

HARVESTRAK MAIN CONTROL BOX - CONTINUED

| KEY | PART NO. | PART NAME       | QTY | SERIAL NO.     | REMARKS          |
|-----|----------|-----------------|-----|----------------|------------------|
| 1   | AH120445 | GAUGE           | 1   |                |                  |
| 2   | AH200641 | CONTROL CONSOLE | 1   |                |                  |
| 3   | H111364  | SCREW           | 1   |                |                  |
| 4   | AH200645 | BRACKET         | 1   |                |                  |
| 5   | .....    | SCREW           | 4   | (SUB AH200816) | 8-32 X 3/8       |
| 6   | AH200755 | WIRING HARNESS  | 1   |                |                  |
| 7   | .....    | SPACER          | 4   | (SUB AH200816) | 4-40NC X 7/8     |
| 8   | AH125627 | CIRCUIT BOARD   | 1   |                |                  |
| 9   | .....    | SPACER          | 1   | (SUB AH200816) | 4-40NC X 1-3/4   |
| 10  | AH200737 | PLATE           | 1   |                |                  |
| 11  | H130153  | KNOB            | 1   |                |                  |
| 12  | .....    | SCREW           | 4   | (SUB AH200816) | NO. 4-48NF X 3/8 |